

Production workshop、Production inspection



m



m



Y90-25 Roundness Tester



metallographic microscope



D914 Outside Diameter Tester



projection length tester



D923 Inner Diameter Tester



Salt-mist Corrosion Tester



HR-150A Hardness Tester



X093 Radial Clearance Tester

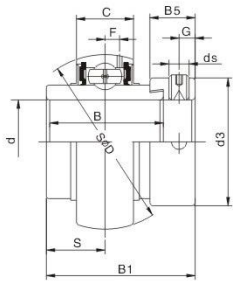
Contents



SS-UC2	(Normal-duty)	01
SS-SB2	(Light-duty)	02
SS-SER2	(Normal-duty)	03
SS-SA2	(Light-duty)	04
SS-HC2	(Normal-duty)	05
SC2	(Light-duty)	06
SC2	(Heavy-duty)	06
SK000	(Light-duty)	07
SU000	(Light-duty)	07
SS-UCP2	(Normal-duty)	08
SS-UCF2	(Normal-duty)	09
SS-UCFC2	(Normal-duty)	10
SS-UCFL2	(Normal-duty)	11
SS-UCT2	(Normal-duty)	12
SS-UCPH2	(Normal-duty)	13
SS-UCPA2	(Normal-duty)	14
SS-UCFA2	(Normal-duty)	15
SS-UCFB2	(Normal-duty)	16
SS-UCHA2	(Normal-duty)	17
SS-SAPP2	(SA2-Fitted)	18
SS-SBPP2	(SB2-Fitted)	18
SS-SAPF2	(SA2-Fitted)	19
SS-SBPF2	(SB2-Fitted)	19
SS-SAPFL2	(SA2-Fitted)	20
SS-SBPFL2	(SB2-Fitted)	20
SS-SAPFT2	(SA2-Fitted)	21
SS-SBPFT2	(SB2-Fitted)	21
SUP	(Light-duty)	22
SUFL	(Light-duty)	22
SKP	(Light-duty)	23
SKFL	(Light-duty)	23
PPL2		24
FPL2		24
NFL2		25
FB2		25
TP2		26
HP2		26
PA2		27
Plastic Covers (Open/Close)		27
The technology request of plastic housing		28
Specifications for general purpose grease(1)		29
Specifications for general purpose grease(2)		30
Material		31
The chemical composition of different stainless steel numbers		31
The contrast of stainless steel steel number of each country		31
Characteristics of sealing		31
The material of seal		32

Ball Bearings
(with eccentric locking collar)

SS-HC2 (Normal-duty)



SL TYPE SEAL



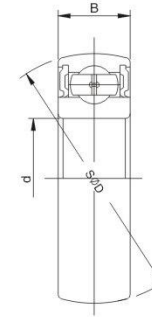
L3 TYPE SEAL

Suffix UNF: Inch sized set screws

Bearing No.	Dimensions mm											Dynamic load ratings N	static load ratings N	Weight (kg)	
	d	D	B	B	C	S	d _e	G	B _s	d _s	F				
SS-HC201	12												12800	6650	0.29
SS-HC201-8	1/2														0.29
SS-HC202	15	47	43.7	34.2	17	17.1	M6x0.75	4.8	13.5	33.3	4.4	12800	6650	0.27	
SS-HC202-9	9/16	1.8504	1.720	1.3465	0.6693	0.673	1/4-28UNF	0.189	0.531	1.311	0.1732			0.26	
SS-HC202-10	5/8													0.26	
SS-HC203	17												12800	6650	0.25
SS-HC203-11	1 1/16													0.25	
SS-HC204	20	47	43.7	34.2	17	17.1	N6x0.75	4.8	13.5	33.3	4.4	12800	6650	0.23	
SS-HC204-12	3/4	1.8504	1.720	1.3465	0.6693	0.673	1/4-28UNF	0.189	0.531	1.311	0.1732			0.23	
SS-HC205	25	52	44.4	34.9	17	17.5	M6x0.75	4.8	13.5	38.1	4.4			0.27	
SS-HC205-13	13/16													0.32	
SS-HC205-14	7/8	2.00472	1.748	1.3740	0.6693	0.689	1/4-28UNF	0.189	0.531	1.500	0.1732	14000	7850	0.31	
SS-HC205-15	15/16													0.29	
SS-HC205-16	1													0.27	
SS-HC206	30	62	48.4	36.5	19	18.3	M8x1	6	15.9	44.5	5.2			0.45	
SS-HC206-17	1-1/16													0.50	
SS-HC206-18	1-1/8	2.4409	1.906	1.4370	0.7480	0.720	5/16-24UNF	0.236	0.626	1.752	0.2047	19500	11300	0.47	
SS-HC206-19	1-3/16													0.45	
SS-HC206-20	1-1/4													0.42	
SS-HC207	35	72	51.1	37.6	20	18.8	M8x1	6.8	17.5	55.6	5.5			0.60	
SS-HC207-20	1-1/4													0.67	
SS-HC207-21	1-5/16	2.8346	2.012	1.4803	0.7874	0.740	5/16-24UNF	0.268	0.689	2.189	0.2165	25700	15300	0.63	
SS-HC207-22	1-3/8													0.60	
SS-HC207-23	1-7/16													0.57	
SS-HC208	40	80	54	40.5	21	19	M8x1	6.8	18.3	60.3	6.2			0.79	
SS-HC208-24	1-1/2	3.1496	2.1260	1.5945	0.8268	0.7480	5/16-24UNF	0.268	0.720	2.374	0.244	29500	18100	0.64	
SS-HC208-25	1-9/16													0.80	
SS-HC209	45	85	54	40.5	22	19	M8x1	6.8	18.3	63.5	6.4			0.85	
SS-HC209-26	1-5/8													0.96	
SS-HC209-27	1-11/16	3.3465	2.1260	1.5945	0.8661	0.7480	5/16-24UNF	0.268	0.720	2.5000	0.252	31600	20600	0.91	
SS-HC209-28	1-3/4													0.87	
SS-HC210	50	90	62.7	49.2	24	24.6	M8x1	6.8	18.3	69.9	6.5			0.99	
SS-HC210-29	1-13/16													1.14	
SS-HC210-30	1-7/8	3.5433	2.469	1.9370	0.9449	0.969	5/16-24UNF	0.268	0.720	2.752	0.256	35000	23200	1.08	
SS-HC210-31	1-15/16													1.02	
SS-HC210-32	2													0.96	
SS-HC211	55	100	71.4	55.5	25	27.8	M10x1	8	20.7	76.2	7.0			1.32	
SS-HC211-32	2													1.52	
SS-HC211-33	2-1/16	3.9370	2.811	2.1850	0.9843	1.094	3/8-24UNF	0.315	0.815	3.000	0.278	43500	29200	1.44	
SS-HC211-34	2-1/8													1.37	
SS-HC211-35	2-3/16													1.29	
SS-HC212	60	110	77.8	61.9	27	31	M10x1.25	8	22.3	84.2	8.5			1.88	
SS-HC212-36	2-1/4													2.04	
SS-HC212-37	2-5/16	4.3307	3.063	2.4370	1.0630	1.220	3/8-24UNF	0.315	0.878	3.315	0.3346	47700	32900	1.95	
SS-HC212-38	2-3/8													1.90	
SS-HC212-39	2-7/16													1.77	
SS-HC213	65	120	85.7	68.6	28	34.1	M10x1.25	8.5	23.5	86	8.5			2.41	
SS-HC213-40	2-1/2	4.7244	3.374	2.7008	1.1024	1.343	3/8-24UNF	0.335	0.925	3.386	0.335	57500	40000	2.51	
SS-HC213-41	2-9/16													2.40	
SS-HC214	70	125	85.7	68.6	29	34.1	M10x1	8.5	23.5	90	8.9			2.55	
SS-HC214-42	2-3/8													2.79	
SS-HC214-43	2-11/16	4.9213	3.374	2.7008	1.1417	1.343	3/8-24UNF	0.335	0.925	3.543	0.335	60800	45000	2.68	
SS-HC214-44	2-3/4													2.56	

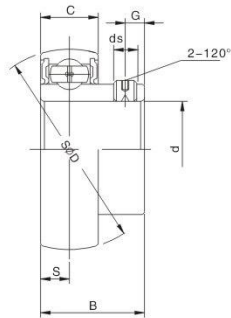
Ball Bearings

SC2 (Light-duty)
SC2 (Heavy-duty)

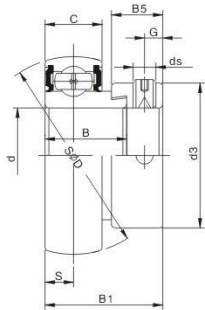


J TYPE SEAL

Bearing No.	Dimensions mm			Dynamic load ratings N	static load ratings N	Weight (kg)
	d	D	B			
SC200	10	30	9	5100	2230	0.031
	0.3937	1.1811	0.3543			
SC201	12	32	10	6800	3050	0.033
	0.4724	1.2598	0.3937			
SC202	15	35	11	7600	3490	0.043
	0.5906	1.3780	0.4331			
SC203	17	40	12	9600	4600	0.061
	0.6693	1.5748	0.4724			
SC204	20	47	14	12800	6650	0.098
	0.7874	1.8504	0.5512			
SC205	25	52	15	14000	7850	0.122
	0.9843	2.0473	0.5906			
SC206	30	62	16	19500	11300	0.195
	1.1181	2.472	0.6299			
SC207	35	72	17	25700	15300	0.280
	1.3780	2.8346	0.6693			
SC208	40	80	18	29500	18100	0.358
	1.5748	3.1496	0.7087			
SC209	45	85	19	31600	20600	0.405
	1.7717	3.3465	0.7480			
SC210	50	90	20	35000	23200	0.449
	1.9685	3.5433	0.7874			
SC211	55	100	21	43500	29200	0.589
	2.1654	3.9370	0.8268			
SC212	60	110	22	47700	32900	0.774
	2.3622	4.3307	0.8861			

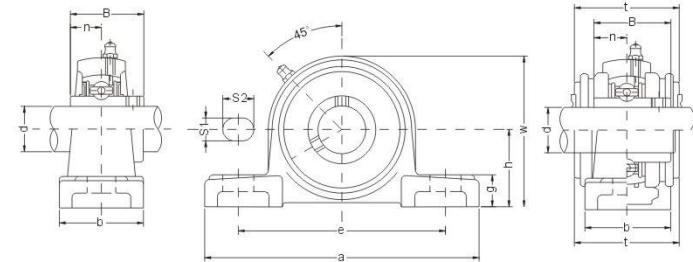


Bearing No.	Dimensions-mm							Dynamic load ratings N	static load ratings N	Weight (kg)
	d	D	B	C	S	G	ds			
SK000	10	26	14	8	4	3	M3x0.35	4600	1960	0.02
SK001	12	28	14.5	8	4	3	M3x0.35	5090	2400	0.03
SK002	15	32	16.5	9	4.5	3.5	M4x0.5	5580	2840	0.04
SK003	17	35	17.5	10	5	3.5	M4x0.5	5970	3280	0.05
SK004	20	42	21	12	6	4	M5x0.8	9350	5040	0.09
SK005	25	47	22.5	12	6	4.5	M5x0.8	10090	5830	0.10
SK006	30	55	24.5	13	6.5	5	M5x0.8	13230	8280	0.15



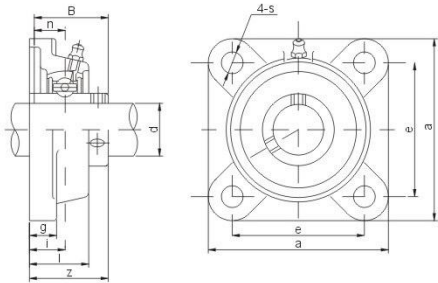
Ball Bearings (with eccentric locking collar)

Bearing No.	Dimensions-mm										Dynamic load ratings N	static load ratings N	Weight (kg)
	d	D	B1	B	C	S	B5	ds	G	d3			
SU000	10	26	17.5	11	8	4	8.5	17	3.5	M4x0.5	4600	1960	0.03
SU001	12	28	17.5	11	8	4	8.5	19	3.5	M4x0.5	5090	2400	0.04
SU002	15	32	18.5	12	9	4.5	8.5	22	3.5	M4x0.5	5580	2840	0.05
SU003	17	35	20.5	13.5	10	5	9.5	25	5.5	M4x0.5	5970	3280	0.06
SU004	20	42	24.5	16.5	12	6	11	30	5	M5x0.8	9350	5040	0.10
SU005	25	47	25.5	17.5	12	6	12	36	5	M5x0.8	10090	5830	0.14
SU006	30	55	26.5	18.5	13	6.5	12	42	5	M5x0.8	13230	8280	0.14
SU007	35	62	29.5	20	14	7	13.5	48	5	M6x0.75	15920	10290	0.25

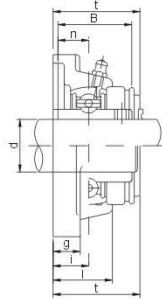


Unit No.	Dimensions mm											Bot Size mm inch	Bearing No.	Housing No.	Weight (kg)
	d	h	a	e	s1	s2	g	w	B	n	n				
SS-UCP201	12	30.2	127	95	38	13	19	14	62	31	12.7	M10	SS-UC201	SP203	0.69
SS-UCP201-8	1/2	1-3/16	5	3-3/4	1-1/2	1/2	3/4	9/16	2-7/16	1.2205	0.500	3/8	SS-UC201-8	SP203	0.69
SS-UCP202	15	30.2	127	95	38	13	19	14	62	31	12.7	M10	SS-UC202	SP203	0.69
SS-UCP202-9	9/16	1-3/16	5	3-3/4	1-1/2	1/2	3/4	9/16	2-7/16	1.2205	0.500	3/8	SS-UC202-9	SP203	0.69
SS-UCP202-10	5/8	1-3/16	5	3-3/4	1-1/2	1/2	3/4	9/16	2-7/16	1.2205	0.500	3/8	SS-UC202-10	SP203	0.68
SS-UCP203	17	30.2	127	95	38	13	19	14	62	31	12.7	M10	SS-UC203	SP203	0.68
SS-UCP203-11	1 1/16	1-3/16	5	3-3/4	1-1/2	1/2	3/4	9/16	2-7/16	1.2205	0.500	3/8	SS-UC203-11	SP203	0.67
SS-UCP204	20	33.3	127	95	38	13	19	14	65	31	12.7	M10	SS-UC204	SP204	0.66
SS-UCP204-12	3/4	1-5/16	5	3-3/4	1-1/2	1/2	3/4	9/16	2-9/16	1.2205	0.500	3/8	SS-UC204-12	SP204	0.66
SS-UCP205	25	36.5	140	105	38	13	19	15	71	34.1	14.3	M10	SS-UC205	SP205	0.81
SS-UCP205-13	13/16	1-7/16	5-1/2	4-1/8	1-1/2	1/2	3/4	19/32	2-25/32	1.3425	0.563	3/8	SS-UC205-13	SP205	0.85
SS-UCP205-14	7/8	1-7/16	5-1/2	4-1/8	1-1/2	1/2	3/4	19/32	2-25/32	1.3425	0.563	3/8	SS-UC205-14	SP205	0.83
SS-UCP205-15	15/16	1-7/16	5-1/2	4-1/8	1-1/2	1/2	3/4	19/32	2-25/32	1.3425	0.563	3/8	SS-UC205-15	SP205	0.82
SS-UCP205-16	1	1-7/16	5-1/2	4-1/8	1-1/2	1/2	3/4	19/32	2-25/32	1.3425	0.563	3/8	SS-UC205-16	SP205	0.81
SS-UCP206	30	42.9	165	121	48	17	20	17	84	38.1	15.9	M14	SS-UC206	SP206	1.24
SS-UCP206-17	1-1/16	1-11/16	6-1/2	4-3/4	1-7/8	43/64	25/32	21/32	3-5/16	1.5000	0.626	1/2	SS-UC206-17	SP206	1.27
SS-UCP206-18	1-1/8	1-11/16	6-1/2	4-3/4	1-7/8	43/64	25/32	21/32	3-5/16	1.5000	0.626	1/2	SS-UC206-18	SP206	1.26
SS-UCP206-19	1-3/16	1-11/16	6-1/2	4-3/4	1-7/8	43/64	25/32	21/32	3-5/16	1.5000	0.626	1/2	SS-UC206-19	SP206	1.24
SS-UCP206-20	1-1/4	1-11/16	6-1/2	4-3/4	1-7/8	43/64	25/32	21/32	3-5/16	1.5000	0.626	1/2	SS-UC206-20	SP206	1.23
SS-UCP207	35	47.6	167	127	48	17	20	18	93	42.9	17.5	M14	SS-UC207	SP207	1.58
SS-UCP207-20	1-1/4	1-11/16	6-1/2	4-3/4	1-7/8	43/64	25/32	21/32	3-5/16	1.5000	0.626	1/2	SS-UC207-20	SP207	1.64
SS-UCP207-21	1-5/16	1-7/8	6-9/16	5	1-7/8	43/64	25/32	45/64	3-21/32	1.6890	0.689	1/2	SS-UC207-21	SP207	1.61
SS-UCP207-22	1-3/8	1-7/8	6-9/16	5	1-7/8	43/64	25/32	45/64	3-21/32	1.6890	0.689	1/2	SS-UC207-22	SP207	1.58
SS-UCP207-23	1-7/16	1-7/8	6-9/16	5	1-7/8	43/64	25/32	45/64	3-21/32	1.6890	0.689	1/2	SS-UC207-23	SP207	1.55
SS-UCP208	40	49.2	164	137	54	17	20	18	100	49.2	19	M14	SS-UC208	SP208	1.88
SS-UCP208-24	1-1/2	1-15/16	7-1/4	5-13/32	2-1/8	43/64	25/32	45/64	3-15/16	1.9370	0.748	1/2	SS-UC208-24	SP208	1.93
SS-UCP208-25	1-3/16	1-15/16	7-1/4	5-13/32	2-1/8	43/64	25/32	45/64	3-15/16	1.9370	0.748	1/2	SS-UC208-25	SP208	1.90
SS-UCP209	45	54.0	190	146	54	17	20	20	106	49.2	19	M14	SS-UC209	SP209	2.14
SS-UCP209-26	1-5/8	2-1/8	7-15/32	5-3/4	2-1/8	43/64	25/32	25/32	4-11/64	1.9370	0.748	1/2	SS-UC209-26	SP209	2.24
SS-UCP209-27	1-11/16	2-1/8	7-15/32	5-3/4	2-1/8	43/64	25/32	25/32	4-11/64	1.9370	0.748	1/2	SS-UC209-27	SP209	2.20
SS-UCP209-28	1-3/4	2-1/8	7-15/32	5-3/4	2-1/8	43/64	25/32	25/32	4-11/64	1.9370	0.748	1/2	SS-UC209-28	SP209	2.14
SS-UCP210	50	57.2	206	159	60	20	23	21	113	51.6	19	M16	SS-UC210	SP210	2.66
SS-UCP210-29	1-13/16	2-1/4	8-1/8	6-1/4	2-3/8	25/32	29/32	53/64	4-29/64	2.0315	0.748	5/8	SS-UC210-29	SP210	2.78
SS-UCP210-30	1-7/8	2-1/4	8-1/8	6-1/4	2-3/8	25/32	29/32	53/64	4-29/64	2.0315	0.748	5/8	SS-UC210-30	SP210	2.73
SS-UCP210-31	1-15/16	2-1/4	8-1/8	6-1/4	2-3/8	25/32	29/32	53/64	4-29/64	2.0315	0.748	5/8	SS-UC210-31	SP210	2.68
SS-UCP210-32	2	2-1/4	8-1/8	6-1/4	2-3/8	25/32	29/32	53/64	4-29/64	2.0315	0.748	5/8	SS-UC210-32	SP210	2.64
SS-UCP211	55	63.5	219	171	60	20	23	23	125	55.6	22.2	M16	SS-UC211	SP211	3.31
SS-UCP211-32	2	2-1/2	8-5/8	6-47/64	2-3/8	25/32	29/32	29/32	4-59/64	2.1890	0.874	5/8	SS-UC211-32	SP211	3.46
SS-UCP211-33	2-1/16	2-1/2	8-5/8	6-47/64	2-3/8	25/32	29/32	29/32	4-59/64	2.1890	0.874	5/8	SS-UC211-33	SP211	3.40
SS-UCP211-34	2-1/8	2-1/2	8-5/8	6-47/64	2-3/8	25/32	29/32	29/32	4-59/64	2.1890	0.874	5/8	SS-UC211-34	SP211	3.35
SS-UCP211-35	2-3/16	2-1/2	8-5/8	6-47/64	2-3/8	25/32	29/32	29/32	4-59/64	2.1890	0.874	5/8	SS-UC211-35	SP211	3.29
SS-UCP212	60	69.8	241	184	70	20	23	25	138	65.1	25.4	M16	SS-UC212	SP212	4.90
SS-UCP212-36	2-1/4	2-3/4	9-1/2	7-1/4	2-3/4	25/32	29/32	63/64	5-7/16	2.5630	1.000	5/8	SS-UC212-36	SP212	5.03
SS-UCP212-37	2-5/16	2-3/4	9-1/2	7-1/4	2-3/4	25/32	29/32	63/64	5-7/16	2.5630	1.000	5/8	SS-UC212-37	SP212	4.95
SS-UCP212-38	2-3/8	2-3/4	9-1/2	7-1/4	2-3/4	25/32	29/32	63/64	5-7/16	2.5630	1.000	5/8	SS-UC212-38	SP212	4.88
SS-UCP212-39	2-7/16	2-3/4	9-1/2	7-1/4	2-3/4	25/32	29/32	63/64	5-7/16	2.5630	1.000	5/8	SS-UC212-39	SP212	4.81
SS-UCP213	65	76.2	265	203	70	25	28	27	150	65.1	25.4	M20	SS-UC213	SP213	5.15
SS-UCP213-40	2-1/2	3	10-7/16	8	2-3/4	63/64	1-3/32	1-11/16	5-29/32	2.5630	1.000	3/4	SS-UC213-40	SP213	5.24
SS-UCP213-41	2-9/16	3	10-7/16	8	2-3/4	63/64	1-3/32	1-11/16	5-29/32	2.5630	1.000	3/4	SS-UC213-41	SP213	5.15
SS-UCP214	70	79.4	266	210	72	25	28	27	156	74.6	30.2	M20	SS-UC214	SP214	6.20
SS-UCP214-42	2-5/8	3-1/8	10-15/32	8-17/64	2-27/32	63/64	1-3/32	1-1/16	6-9/64	2.9370	1.189	3/4	SS-UC214-42	SP214	6.41
SS-UCP214-43	2-11/16	3-1/8	10-15/32	8-17/64	2-27/32	63/64	1-3/32	1-1/16	6-9/64	2.9370	1.189	3/4	SS-UC214-43	SP214	6.31
SS-UCP214-44	2-3/4	3-1/8	10-15/32	8-											

Flange Units (Square)



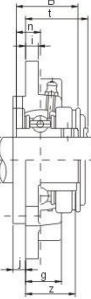
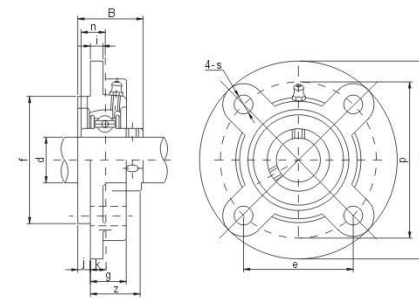
SS-UCF2 (Normal-duty)



UCF-C(D)

Unit No.	Dimensions mm in.											Bolt Size mm inch	Bearing No.	Housing No.	Weight (kg)
	d	a	e	i	g	l	s	z	B	n	t				
SS-UCF201	12	86	64	15	12	25.5	12	33.3	31	12.7	M10	SS-UC201	SF204	0.60	
SS-UCF201-8	1/2	3-3/8	2-33/64	19/32	15/32	1	15/32	1-5/16	1.2205	0.500	3/8	SS-UC201-8	SF204	0.59	
SS-UCF202	15	86	64	15	12	25.5	12	33.3	31	12.7	M10	SS-UC202	SF204	0.59	
SS-UCF202-9	9/16	3-3/8	2-33/64	19/32	15/32	1	15/32	1-5/16	1.2205	0.500	3/8	SS-UC202-9	SF204	0.59	
SS-UCF202-10	5/8											SS-UC202-10		0.59	
SS-UCF203	17	86	64	15	12	25.5	12	33.3	31	12.7	M10	SS-UC203	SF204	0.58	
SS-UCF203-11	11/16	3-3/8	2-33/64	19/32	15/32	1	15/32	1-5/16	1.2205	0.500	3/8	SS-UC203-11	SF204	0.57	
SS-UCF204	20	86	64	15	12	25.5	12	33.3	31	12.7	M10	SS-UC204	SF204	0.56	
SS-UCF204-12	3/4	3-3/8	2-33/64	19/32	15/32	1	15/32	1-5/16	1.2205	0.500	3/8	SS-UC204-12	SF204	0.56	
SS-UCF205	25	95	70	16	14	27	12	35.8	34.1	14.3	M10	SS-UC205		0.80	
SS-UCF205-13	1 13/16											SS-UC205-13	SF205	0.84	
SS-UCF205-14	7/8	3-3/4	2-3/4	5/8	35/64	1-1/16	15/32	1-13/32	1.3425	0.563	3/8	SS-UC205-14	SF205	0.83	
SS-UCF205-15	15/16											SS-UC205-15	SF205	0.81	
SS-UCF205-16	1											SS-UC205-16	SF205	0.80	
SS-UCF206	30	108	83	18	14	31	12	40.2	38.1	15.9	M10	SS-UC206	SF206	1.12	
SS-UCF206-17	1-1/16											SS-UC206-17	SF206	1.15	
SS-UCF206-18	1-1/8	4-1/4	3-17/64	45/64	35/64	1-7/32	15/32	1-19/32	1.5000	0.626	3/8	SS-UC206-18	SF206	1.14	
SS-UCF206-19	1-3/16											SS-UC206-19	SF206	1.12	
SS-UCF206-20	1-1/4											SS-UC206-20	SF206	1.11	
SS-UCF207	35	117	92	19	16	34	14	44.4	42.9	17.5	M12	SS-UC207	SF207	1.46	
SS-UCF207-20	1-1/4											SS-UC207-20	SF207	1.52	
SS-UCF207-21	1-5/16	4-39/64	3-5/8	3/4	5/8	1-11/32	35/64	1-3/4	1.6890	0.689	7/16	SS-UC207-21	SF207	1.49	
SS-UCF207-22	1-3/8											SS-UC207-22	SF207	1.46	
SS-UCF207-23	1-7/16											SS-UC207-23	SF207	1.43	
SS-UCF208	40	130	102	21	16	36	16	51.2	49.2	19	M14	SS-UC208	SF208	1.84	
SS-UCF208-24	1-1/2	5-1/8	4-1/64	53/64	5/8	1-27/64	5/8	2-1/64	1.9370	0.748	1/2	SS-UC208-24	SF208	1.85	
SS-UCF208-25	1-9/16											SS-UC208-25	SF208	1.85	
SS-UCF209	45	137	105	22	18	38	16	52.2	49.2	19	M14	SS-UC209	SF209	2.15	
SS-UCF209-26	1-5/8											SS-UC209-26	SF209	2.25	
SS-UCF209-27	1-11/16	5-13/32	4-9/64	55/64	23/32	1-1/2	5/8	2-1/16	1.9370	0.748	1/2	SS-UC209-27	SF209	2.21	
SS-UCF209-28	1-3/4											SS-UC209-28	SF209	2.17	
SS-UCF210	50	143	111	22	18	40	16	54.6	51.6	19	M14	SS-UC210	SF210	2.42	
SS-UCF210-29	1-13/16											SS-UC210-29	SF210	2.54	
SS-UCF210-30	1-7/8	5-5/8	4-3/8	55/64	23/32	1-9/16	5/8	2-5/32	2.0315	0.748	1/2	SS-UC210-30	SF210	2.49	
SS-UCF210-31	1-15/16											SS-UC210-31	SF210	2.44	
SS-UCF210-32	2											SS-UC210-32	SF210	2.40	
SS-UCF211	55	162	130	25	20	43	19	58.4	55.6	22.2	M16	SS-UC211	SF211	3.31	
SS-UCF211-32	2											SS-UC211-32	SF211	3.46	
SS-UCF211-33	2-1/16	6-3/8	5-1/8	63/64	25/32	1-11/16	3/4	1-5/16	2.1890	0.874	5/8	SS-UC211-33	SF211	3.40	
SS-UCF211-34	2-1/8											SS-UC211-34	SF211	3.35	
SS-UCF211-35	2-3/16											SS-UC211-35	SF211	3.29	
SS-UCF212	60	175	143	29	20	48	19	68.7	65.1	25.4	M16	SS-UC212	SF212	4.28	
SS-UCF212-36	2-1/4											SS-UC212-36	SF212	4.41	
SS-UCF212-37	2-5/16	6-57/64	5-5/8	1-9/64	25/32	1-57/64	3/4	2-45/64	2.5630	1.000	5/8	SS-UC212-37	SF212	4.33	
SS-UCF212-38	2-3/8											SS-UC212-38	SF212	4.26	
SS-UCF212-39	2-7/16											SS-UC212-39	SF212	4.19	
SS-UCF213	65	187	149	30	22	50	19	69.7	65.1	25.4	M16	SS-UC213	SF213	4.99	
SS-UCF213-40	2-1/2	7-23/64	5-55/64	1-3/16	55/64	1-31/32	3/4	2-3/4	2.5630	1.000	5/8	SS-UC213-40	SF213	5.08	
SS-UCF213-41	2-9/16											SS-UC213-41	SF213	4.99	
SS-UCF214	70	193	152	31	22	54	19	75.4	74.6	30.2	M16	SS-UC214	SF214	5.85	
SS-UCF214-42	2-5/8											SS-UC214-42	SF214	6.06	
SS-UCF214-43	2-11/16	7-19/32	5-63/64	1-7/32	55/64	2-1/8	3/4	2-31/32	2.9370	1.189	5/8	SS-UC214-43	SF214	5.96	
SS-UCF214-44	2-3/4											SS-UC214-44	SF214	5.86	

Flange Cartridge Units

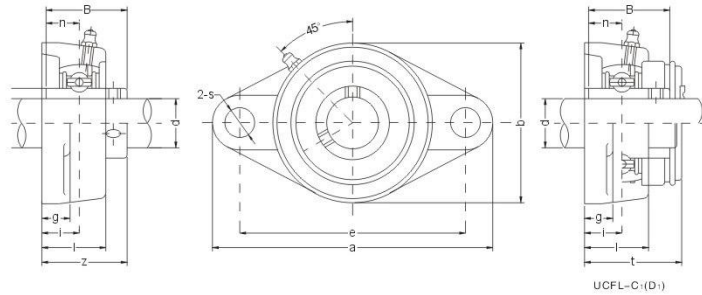


UCFC-C(D)

SS-UCFC2 (Normal-duty)

Unit No.	Dimensions mm in.														Bolt Size mm inch	Bearing No.	Housing No.	Weight (kg)
	d	a	p	e	i	k	g	f	z	B	n	t	g	z				
SS-UCFC201	12	100	78	55.1	10	12	5	7	20.5	62	28.3	31	12.7	M10	SS-UC201	SFC204	0.73	
SS-UCFC201-8	1/2	3-15/16	3-5/64	2-11/64	25/64	15/32	13/64	9/32	13/16	2.4409	1-1/8	1.2205	0.500	3/8	SS-UC201-8	SFC204	0.72	
SS-UCFC202	15	100	78	55.1	10	12	5	7	20.5	62	28.3	31	12.7	M10	SS-UC202	SFC204	0.72	
SS-UCFC202-9	9/16	3-15/16	3-5/64	2-11/64	25/64	15/32	13/64	9/32	13/16	2.4409	1-1/8	1.2205	0.500	3/8	SS-UC202-9	SFC204	0.72	
SS-UCFC202-10	5/8														SS-UC202-10		0.72	
SS-UCFC203	17	100	78	55.1	10	12	5	7	20.5	62	28.3	31	12.7	M10	SS-UC203	SFC204	0.71	
SS-UCFC203-11	11/16	3-15/16	3-5/64	2-11/64	25/64	15/32	13/64	9/32	13/16	2.4409	1-1/8	1.2205	0.500	3/8	SS-UC203-11	SFC204	0.70	
SS-UCFC204	20	100	78	55.1	10	12	5	7	20.5	62	28.3	31	12.7	M10	SS-UC204	SFC204	0.69	
SS-UCFC204-12	3/4	3-15/16	3-5/64	2-11/64	25/64	15/32	13/64	9/32	13/16	2.4409	1-1/8	1.2205	0.500	3/8	SS-UC204-12	SFC204	0.69	
SS-UCFC205	25	115	90	63.6	10	12	6	7	21	70	29.8	34.1	14.3	M10	SS-UC205		1.00	
SS-UCFC205-13	1 13/16														SS-UC205-13	SFC205	1.04	
SS-UCFC205-14	7/8	4-17/32	3-35/64	2-1/2	25/64	15/32	15/64	9/32	53/64	2.7559	1-11/64	1.3425	0.563	3/8	SS-UC205-14	SFC205	1.03	
SS-UCFC205-15	15/16														SS-UC205-15	SFC205	1.01	
SS-UCFC205-16	1														SS-UC205-16	SFC205	1.00	
SS-UCFC206	30	125	100	70.7	10	12	8	8	23	80	32.2	38.1	15.9	M10	SS-UC206	SFC206	1.30	
SS-UCFC206-17	1-1/16														SS-UC206-17	SFC206	1.31	
SS-UCFC206-18	1-1/8	4-59/64	3-15/16	2-25/32	25/64	15/32	5/16	5/16	29/32	3.1496	1-17/64	1.5000	0.626	3/8	SS-UC206-18	SFC206	1.32	
SS-UCFC206-19	1-3/16														SS-UC206-19	SFC206	1.30	
SS-UCFC206-20	1-1/4														SS-UC206-20	SFC206	1.29	
SS-UCFC207	35	135	110	77.8	11	14	8	9	26	90	36.4	42.9	17.5	M12	SS-UC207	SFC207	1.81	
SS-UCFC207-20	1-1/4														SS-UC207-20	SFC207	1.87	
SS-UCFC207-21	1-5/16	5-5/16	4-21/64	3-1/16	7/16	35/64	5/16	23/64	1-1/32	3.1496	1-7/16	1.6890	0.689	7/16	SS-UC207-21	SFC207	1.84	
SS-UCFC207-22	1-3/8														SS-UC207-22	SFC207	1.81	
SS-UCFC207-23	1-7/16														SS-UC207-23	SFC207	1.78	
SS-UCFC208	40	145	120	84.8	11	14	10	9	26	100	41.2	49.2	19	M12	SS-UC208	SFC208	2.14	
SS-UCFC208-24	1-1/2	5-45/64	4-23/32	3-11/32	7/16	35/64	25/64	23/64	1-1/32	3.9370	1-5/8	1.9370	0.748	7/16	SS-UC208-24	SFC208	2.18	
SS-UCFC208-25	1-9/16														SS-UC208-25	SFC208	2.15	
SS-UCFC209	45	160	132	9														

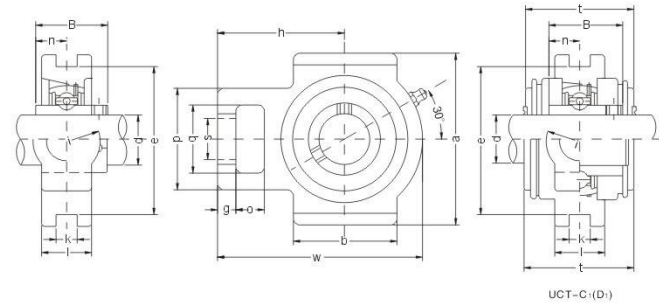
Flange Unit (Oval)



SS-UCFL2 (Normal-duty)

Unit No.	Dimensions mm												Bolt Size mm	Bearing No.	Housing No.	Weight (kg)
	d	a	e	i	g	l	S	b	z	B	n	h				
SS-UCFL201	12	113	90	15	11	25.5	12	60	33.3	31	12.7	12.205	M10	SS-UC201	SFL204	0.45
SS-UCFL201-8	1/2	4-7/16	3-3/8	19/32	7/16	1	15/32	2-3/8	1-5/16	1.2205	0.500	3/8				0.44
SS-UCFL202	15	113	90	15	11	25.5	12	60	33.3	31	12.7	1.2205	M10	SS-UC202	SFL204	0.44
SS-UCFL202-9	9/16	4-7/16	3-3/8	19/32	7/16	1	15/32	2-3/8	1-5/16	1.2205	0.500	3/8				0.44
SS-UCFL202-10	50															0.44
SS-UCFL203	17	113	90	15	11	25.5	12	60	33.3	31	12.7	1.2205	M10	SS-UC203	SFL204	0.43
SS-UCFL203-11	1 1/16	4-7/16	3-3/8	19/32	7/16	1	15/32	2-3/8	1-5/16	1.2205	0.500	3/8				0.42
SS-UCFL204	20	113	90	15	11	25.5	12	60	33.3	31	12.7	1.2205	M10	SS-UC204	SFL204	0.41
SS-UCFL204-12	3/4	4-7/16	3-3/8	19/32	7/16	1	15/32	2-3/8	1-5/16	1.2205	0.500	3/8				0.41
SS-UCFL205	25	130	99	16	13	27	16	68	35.8	34.1	14.3		M14	SS-UC205		0.58
SS-UCFL205-13	13/16															0.62
SS-UCFL205-14	7/8	5-1/8	3-5/8	5/8	1/2	1-1/16	5/8	2-11/16	1-13/32	1.3425	0.563	1/2		SFL205		0.61
SS-UCFL205-15	15/16															0.59
SS-UCFL205-16	1															0.58
SS-UCFL206	30	148	117	18	13	31	16	80	40.2	38.1	15.9		M14	SS-UC206	SFL206	0.86
SS-UCFL206-17	1-1/16															0.89
SS-UCFL206-18	1-1/8	5-13/16	4-39/64	45/64	1/2	1-7/32	5/8	3-5/32	1-19/32	1.5000	0.626	1/2				0.88
SS-UCFL206-19	1-3/16															0.86
SS-UCFL206-20	1-1/4															0.85
SS-UCFL207	35	161	130	19	14	34	16	90	44.4	42.9	17.5		M14	SS-UC207	SFL207	1.08
SS-UCFL207-20	1-1/4															1.14
SS-UCFL207-21	1-9/16	6-11/32	5-1/8	3/4	35/64	1-13/32	5/8	3-35/64	1-3/4	1.6890	0.689	1/2				1.11
SS-UCFL207-22	1-3/8															1.08
SS-UCFL207-23	1-7/16															1.05
SS-UCFL208	40	175	144	21	14	36	16	100	51.2	49.2	19		M14	SS-UC208	SFL208	1.44
SS-UCFL208-24	1-1/2	6-7/8	5-43/64	53/64	35/64	1-13/32	5/8	3-15/16	2-1/64	1.9370	0.748	1/2				1.45
SS-UCFL208-25	1-9/16															1.45
SS-UCFL209	45	188	148	22	15	38	19	108	52.2	49.2	19		M16	SS-UC209	SFL209	1.74
SS-UCFL209-26	1-5/8															1.84
SS-UCFL209-27	1-11/16	7-13/32	5-53/64	55/64	19/32	1-1/2	3/4	4-1/4	2-1/16	1.9370	0.748	5/8				1.80
SS-UCFL209-28	1-3/4															1.78
SS-UCFL210	50	197	157	22	15	40	19	115	54.6	51.6	19		M16	SS-UC210	SFL210	2.10
SS-UCFL210-29	1-13/16															2.22
SS-UCFL210-30	1-7/8	7-3/4	6-3/16	55/64	19/32	1-37/64	3/4	4-17/32	2-5/32	2.0315	0.748	5/8				2.17
SS-UCFL210-31	1-15/16															2.12
SS-UCFL210-32	2															2.08
SS-UCFL211	55	224	184	25	18	43	19	130	58.4	55.6	22.2		M16	SS-UC211	SFL211	2.91
SS-UCFL211-32	2															3.06
SS-UCFL211-33	2-1/16	8-13/16	7-1/4	63/64	23/32	1-11/16	3/4	5-1/8	2-5/16	2.1890	0.874	5/8				3.00
SS-UCFL211-34	2-1/8															2.95
SS-UCFL211-35	2-3/16															2.89
SS-UCFL212	60	250	202	29	18	48	23	140	68.7	65.1	25.4		M20	SS-UC212	SFL212	3.74
SS-UCFL212-36	2-1/4															3.87
SS-UCFL212-37	2-9/16	9-27/32	7-81/64	1-9/64	23/32	1-7/8	29/32	5-1/2	2-23/32	2.5630	1.000	3/4				3.79
SS-UCFL212-38	2-3/8															3.72
SS-UCFL212-39	2-7/16															3.65
SS-UCFL213	65	258	210	30	22	50	23	155	69.7	65.1	25.4		M20	SS-UC213	SFL213	4.57
SS-UCFL213-40	2-1/2	10-5/32	8-17/64	1-3/16	7/8	1-31/32	29/32	6-3/32	2-3/4	2.5630	1.000	3/4				4.66
SS-UCFL213-41	2-9/16															4.57
SS-UCFL214	70	265	216	31	22	54	23	160	75.4	74.6	30.2		M20	SS-UC214	SFL214	5.11
SS-UCFL214-42	2-5/8															5.32
SS-UCFL214-43	2-11/16	10-7/16	8-1/2	1-7/32	7/8	2-1/8	29/32	6-5/16	2-31/32	2.9370	1.189	3/4				5.22
SS-UCFL214-44	2-3/4															5.12

Take-up Units

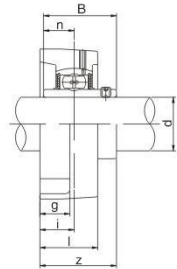
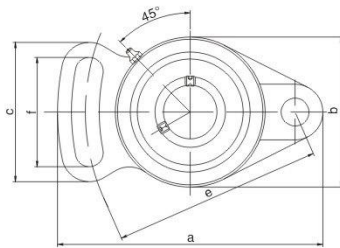


SS-UCT2 (Normal-duty)

Unit No.	Dimensions mm															Bearing No.	Housing No.	Weight (kg)	
	d	o	g	p	q	S	b	k	e	a	w	j	l	h	B				n
SS-UCT201	12	16	10	51	32	19	51	12	76	89	94	32	21	61	31	12.7	SS-UC201	ST204	0.80
SS-UCT201-8	1/2	5/8	25/64	1-1/4	1-1/4	3/4	2-1/64	15/32	2-63/64	3-1/2	3-11/16	1-1/4	13/16	2-13/32	1.2205	0.500			0.79
SS-UCT202	15	16	10	51	32	19	51	12	76	89	94	32	21	61	31	12.7	SS-UC202	ST204	0.79
SS-UCT202-9	9/16	5/8	25/64	1-1/4	1-1/4	3/4	2-1/64	15/32	2-63/64	3-1/2	3-11/16	1-1/4	13/16	2-13/32	1.2205	0.500			0.79
SS-UCT202-10	50																		0.79
SS-UCT203	17	16	10	51	32	19	51	12	76	89	94	32	21	61	31	12.7	SS-UC203	ST204	0.78
SS-UCT203-11	1 1/16	5/8	25/64	1-1/4	1-1/4	3/4	2-1/64	15/32	2-63/64	3-1/2	3-11/16	1-1/4	13/16	2-13/32	1.2205	0.500			0.77
SS-UCT204	20	16	10	51	32	19	51	12	76	89	94	32	21	61	31	12.7	SS-UC204	ST204	0.76
SS-UCT204-12	3/4	5/8	25/64	1-1/4	1-1/4	3/4	2-1/64	15/32	2-63/64	3-1/2	3-11/16	1-1/4	13/16	2-13/32	1.2205	0.500			0.76
SS-UCT205	25	16	10	51	32	19	51	12	76	89	97	32	24	62	34.1	14.3	SS-UC205		0.81
SS-UCT205-13	13/16																		0.85
SS-UCT205-14	7/8	5/8	25/64	1-1/4	1-1/4	3/4	2-1/64	15/32	2-63/64	3-1/2	3-13/16	1-1/4	13/16	2-7/16	1.3425	0.563	SS-UC205-14	ST205	0.84
SS-UCT205-15	15/16																		0.82
SS-UCT205-16	1																		0.81
SS-UCT206	30	16	10	56	37	22	57	12	89	102	113	37	28	70	38.1	15.9	SS-UC206	ST206	1.22
SS-UCT206-17	1-1/16																		1.23
SS-UCT206-18	1-1/8	5/8	25/64	2-7/32	1-29/64	55/64	2-1/4	15/32	3-1/2	4-1/64	4-29/64	1-29/64	1-3/32	2-3/4	1.5000	0.626	SS-UC206-18		1.24
SS-UCT206-19	1-3/16																		1.22
SS-UCT206-20	1-1/4																		1.21
SS-UCT207	35	16	13	64	37	22	64	12	89	102	129	37	30	78	42.9	17.5	SS-UC207	ST207	1.44
SS-UCT207-20	1-1/4																		1.50
SS-UCT207-21	1-9/16	5/8	33/64	2-33/64	1-29/64	55/64	2-33/64	15/32	3-1/2	4-1/64	5-5/64	1-29/64	1-3/16	3-5/64	1.6				

Flange Units

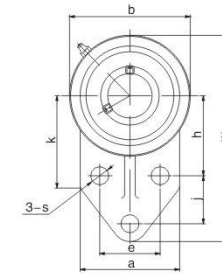
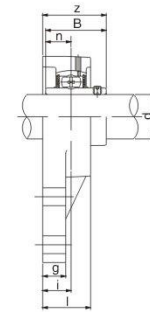
SS-UCFA2 (Normal-duty)



Unit No.	Dimensions mm in.													Bolt Size mm inch	Bearing No.	Housing No.	Weight (kg)
	d	a	e	i	g	S	z	f	c	B	n						
SS-UCFA201	12	98	78	15	12	25.5	10	60	33.3	40	50	31	12.7	M8	SS-UC201		0.50
SS-UCFA201-8	1/2														SS-UC201-8		0.49
SS-UCFA202	15														SS-UC202		0.49
SS-UCFA202-9	9/16														SS-UC202-9		0.49
SS-UCFA202-10	5/8	3-55/64	3-5/64	19/32	15/32	1	25/64	2-3/8	1-5/16	1-37/64	1-31/32	1.2205	0.500	5/16	SS-UC202-10	SFA204	0.49
SS-UCFA203	17														SS-UC203		0.48
SS-UCFA203-11	11/16														SS-UC203-11		0.47
SS-UCFA204	20														SS-UC204		0.46
SS-UCFA204-12	3/4														SS-UC204-12		0.46
SS-UCFA205	25	124	98	16	14	27	13	70	35.8	51	65	34.1	14.3	M10	SS-UC205		0.66
SS-UCFA205-13	13/16														SS-UC205-13		0.70
SS-UCFA205-14	7/8	4-7/8	3-55/64	5/8	35/64	1-1/16	33/64	2-3/4	1-13/32	2-1/64	2-9/16	1.3425	0.563	3/8	SS-UC205-14	SFA205	0.69
SS-UCFA205-15	15/16														SS-UC205-15		0.67
SS-UCFA205-16	1														SS-UC205-16		0.66
SS-UCFA206	30	141	115	18	14	31	13	83	40.2	58	72	38.1	15.9	M10	SS-UC206		0.93
SS-UCFA206-17	1-1/16														SS-UC206-17		0.96
SS-UCFA206-18	1-1/8	5-35/64	4-17/32	45/64	35/64	1-7/32	33/64	3-17/64	1-19/32	2-9/32	2-27/32	1.5000	0.626	3/8	SS-UC206-18	SFA206	0.95
SS-UCFA206-19	1-3/16														SS-UC206-19		0.93
SS-UCFA206-20	1-1/4														SS-UC206-20		0.92
SS-UCFA207	35	155	128	19	16	34	15	96	44.4	66	82	42.9	17.5	M12	SS-UC207		1.46
SS-UCFA207-20	1-1/4														SS-UC207-20		1.52
SS-UCFA207-21	1-5/16	6-7/64	5-3/64	3/4	5/8	1-11/32	19/32	3-25/32	1-3/4	2-19/32	3-15/64	1.6890	0.689	7/16	SS-UC207-21	SFA207	1.49
SS-UCFA207-22	1-3/8														SS-UC207-22		1.46
SS-UCFA207-23	1-7/16														SS-UC207-23		1.43
SS-UCFA208	40	171	142	21	16	38	15	105	51.2	71	87	49.2	19	M12	SS-UC208		1.78
SS-UCFA208-24	1-1/12	47/64	5-19/32	53/64	5/8	1-1/2	19/32	4-9/64	2-1/64	2-51/64	3-27/64	1.9370	0.748	7/16	SS-UC208-24	SFA208	1.82
SS-UCFA208-25	1-9/16														SS-UC208-25		1.79
SS-UCFA209	45	179	146	22	18	40	17	111	52.2	72	90	49.2	19	M14	SS-UC209		2.03
SS-UCFA209-26	1-5/8														SS-UC209-26		2.13
SS-UCFA209-27	1-11/16	7-3/64	5-3/4	55/64	45/64	1-37/64	43/64	4-3/8	2-1/16	2-53/64	3-35/64	1.9370	0.748	1/2	SS-UC209-27	SFA209	2.09
SS-UCFA209-28	1-3/4														SS-UC209-28		2.05
SS-UCFA210	50	189	155	22	18	40	17	116	54.6	76	94	51.6	19	M14	SS-UC210		2.23
SS-UCFA210-29	1-13/16														SS-UC210-29		2.35
SS-UCFA210-30	1-7/8	7-7/16	6-7/64	55/64	45/64	1-37/64	43/64	4-9/16	2-5/32	3	3-45/64	2.0315	0.748	1/2	SS-UC210-30	SFA210	2.30
SS-UCFA210-31	1-15/16														SS-UC210-31		2.25
SS-UCFA210-32	2														SS-UC210-32		2.21
SS-UCFA211	55	216	182	25	20	44	17	133	58.4	86	104	55.6	22.2	M14	SS-UC211		3.41
SS-UCFA211-32	2														SS-UC211-32		3.56
SS-UCFA211-33	2-1/16	8-1/2	7-11/64	63/64	25/32	1-47/64	43/64	5-51/64	2-5/16	3-25/64	4-3/32	2.1890	0.874	1/2	SS-UC211-33	SFA211	3.5
SS-UCFA211-34	2-1/8														SS-UC211-34		3.45
SS-UCFA211-35	2-3/16														SS-UC211-35		3.39
SS-UCFA212	60	240	202	29	20	48	19	140	68.7	100	118	65.1	25.4	M16	SS-UC212		4.14
SS-UCFA212-36	2-1/4														SS-UC212-36		4.27
SS-UCFA212-37	2-5/16	9-29/64	7-61/64	1-9/64	25/32	1-7/8	3/4	5-1/2	2-23/32	3-15/16	4-41/64	2.5630	1.000	5/8	SS-UC212-37	SFA212	4.19
SS-UCFA212-38	2-3/8														SS-UC212-38		4.12
SS-UCFA212-39	2-7/16														SS-UC212-39		4.05
SS-UCFA213	65	250	210	30	20	50	19	155	69.7	102	122	65.1	25.4	M16	SS-UC213		5.35
SS-UCFA213-40	2-1/2	9-27/32	8-17/64	1-3/16	25/32	1-31/32	3/4	6-3/32	2-3/4	4-1/64	4-51/64	2.5630	1.000	5/8	SS-UC213-40	SFA213	5.44
SS-UCFA213-41	2-9/16														SS-UC213-41		5.35

Flange Units

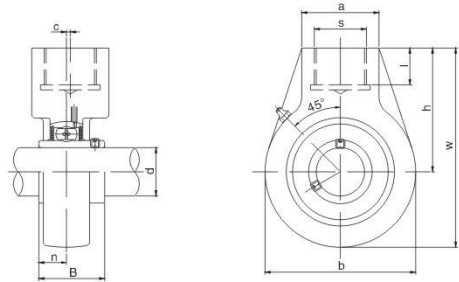
SS-UCFB2 (Normal-duty)



Unit No.	Dimensions mm in.													Bolt Size mm inch	Bearing No.	Housing No.	Weight (kg)		
	d	w	b	k	a	l	S	g	h	j	e	i	z					B	n
SS-UCFB201	12	110	62	52	52	25.5	10	13	42	27	32	15	33.3	31	12.7	M8	SS-UC201		0.58
SS-UCFB201-8	1/2																SS-UC201-8		0.57
SS-UCFB202	15																SS-UC202		0.57
SS-UCFB202-9	9/16																SS-UC202-9		0.57
SS-UCFB202-10	5/8	4-11/32	2-7/16	2-1/16	2-1/16	1	25/64	1/2	1-21/32	1-1/16	1-17/64	19/32	1-51/64	1.2205	0.500	5/16	SS-UC202-10	SFB204	0.57
SS-UCFB203	17																SS-UC203		0.56
SS-UCFB203-11	11/16																SS-UC203-11		0.55
SS-UCFB204	20																SS-UC204		0.54
SS-UCFB204-12	3/4																SS-UC204-12		0.54
SS-UCFB205	25	116	68	52	56	27	10	13	45	27	34	16	35.8	34.1	14.3	M8	SS-UC205		0.79
SS-UCFB205-13	13/16																SS-UC205-13		0.83
SS-UCFB205-14	7/8	4-9/16	2-11/16	2-1/16	2-7/32	1-1/16	25/64	1/2	1-49/64	1-1/16	1-11/32	5/8	1-13/32	1.3425	0.563	5/16	SS-UC205-14	SFB205	0.82
SS-UCFB205-15	15/16																SS-UC205-15		0.80
SS-UCFB205-16	1																SS-UC205-16		0.79
SS-UCFB206	30	130	78	55	65	31	10	13	50	29	40	18	40.2	38.1	15.9	M8	SS-UC206		0.95
SS-UCFB206-17	1-1/16																SS-UC206-17		0.98
SS-UCFB206-18	1-1/8	5-18	3-1/16	2-5/32	2-9/16	1-7/32	25/64	1/2	1-31/32	1-9/64	1-37/64	45/64	1-19/32	1.5000	0.626	5/16	SS-UC206-18	SFB206	0.97
SS-UCFB206-19	1-3/16																SS-UC206-19		0.95
SS-UCFB206-20	1-1/4																SS-UC206-20		0.94
SS-UCFB207	35	144	90	62	70	34	10	15	55	32	46	19	44.4	42.9	17.5	M8	SS-UC207		1.29
SS-UCFB207-20	1-1/4																SS-UC207-20		1.35
SS-UCFB207-21	1-5/16	6-21/32	3-35/64	2-7/16	2-3/4	1-11/32	25/64	19/32	2-11/64	1-17/64	1-13/16	3/4	1-3/4	1.6890	0.689	5/16	SS-UC207-21	SFB207	1.32
SS-UCFB207-22	1-3/8																SS-UC207-22		0.29
SS-UCFB207-23	1-7/16																SS-UC207-23		1.26
SS-UCFB208	40	164	100	72	78	36	12	16	60	41	50	21	51.2	49.2	19	M10	SS-UC208		1.78
SS-UCFB208-24	1-1/12	6-15/32	3-15/16	2-27/32	3-1/16	1-13/32	15/32	5/8	2-23/64	1-39/64	1-31/32	53/64	2-1/64	1.9370	0.748	3/8	SS-UC208-24	SFB208	1.82
SS-UCFB208-25	1-9/16																SS-UC208-25		1.79
SS-UCFB209	45	174	106	76	80	38	12	18	65	43	54	22	52.2	49.2	19	M10	SS-UC209		1.91
SS-UCFB209-26	1-5/8																SS-UC209-26		2.01
SS-UCFB209-27	1-11/16	6-27/32	4-3/16	3	3-5/32	1-1/2	15/32	23/32	2-9/16	1-11/16	2-1/8	55/64	2-1/16	1.9370	0.748	3/8	SS-UC209-27	SFB209	1.97
SS-UCFB209-28	1-3/4																SS-UC209-28		1.93
SS-UCFB210	50	184	112	82	86	40	12	18	68	46	58	22	54.6	51.6	19	M10	SS-UC210		2.36
SS-UCFB210-29	1-13/16																SS-UC210-29		2.48
SS-UCFB210-30	1-7/8	7																	

Screw Conveyor Hanger Units

SS-UCHA2 (Normal-duty)

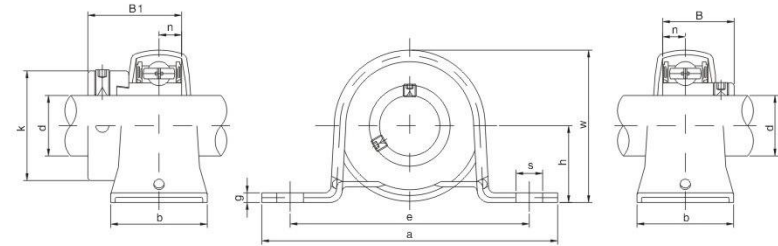


Unit No.	Dimensions mm in.										Bearing No.	Housing No.	Weight (kg)
	d	h	w	b	c	a	S	l	B	n			
SS-UCHA201	12	64	96	64	0	40		19	31	12.7	SS-UC201		0.73
SS-UCHA201-8	1/2										SS-UC201-8		0.72
SS-UCHA202	15										SS-UC202		0.72
SS-UCHA202-9	9/16										SS-UC202-9		0.72
SS-UCHA202-10	5/8	2-33/64	3-25/32	2-33/64	0	1-37/64	G-3/4	3/4	1.2205	0.500	SS-UC202-10	SHA204	0.72
SS-UCHA203	17										SS-UC203		0.71
SS-UCHA203-11	1 1/16										SS-UC203-11		0.70
SS-UCHA204	20										SS-UC204		0.69
SS-UCHA204-12	3/4										SS-UC204-12		0.69
SS-UCHA205	25	64	103	78	0	40		19	34.1	14.3	SS-UC205		0.83
SS-UCHA205-13	13/16										SS-UC205-13		0.87
SS-UCHA205-14	7/8	2-33/64	4-1/16	3-5/64	0	1-37/64	G-3/4	3/4	1.3425	0.563	SS-UC205-14	SHA205	0.86
SS-UCHA205-15	15/16										SS-UC205-15		0.84
SS-UCHA205-16	1										SS-UC205-16		0.83
SS-UCHA206	30	64	103	78	0	40		19	38.1	15.9	SS-UC206		0.83
SS-UCHA206-17	1-1/16										SS-UC206-17		0.86
SS-UCHA206-18	1-1/8	2-33/64	4-1/16	3-5/64	0	1-37/64	G-3/4	3/4	1.5000	0.626	SS-UC206-18	SHA206	0.85
SS-UCHA206-19	1-3/16										SS-UC206-19		0.83
SS-UCHA206-20	1-1/4										SS-UC206-20		0.82
SS-UCHA207	35	70	116	92	0	40		19	42.9	17.5	SS-UC207		1.16
SS-UCHA207-20	1-1/4										SS-UC207-20		1.22
SS-UCHA207-21	1-5/16	2-3/4	4-9/16	3-5/8	0	1-37/64	G-3/4	3/4	1.6890	0.689	SS-UC207-21	SHA207	1.19
SS-UCHA207-22	1-3/8										SS-UC207-22		1.16
SS-UCHA207-23	1-7/16										SS-UC207-23		1.13
SS-UCHA208	40	73	121	96	2	40		19	49.2	19	SS-UC208		1.32
SS-UCHA208-24	1-1/12	2-7/8	4-49/64	3-25/32	5/64	1-37/64	G-3/4	3/4	1.9370	0.748	SS-UC208-24	SHA208	1.36
SS-UCHA208-25	1-9/16										SS-UC208-25		1.33
SS-UCHA209	45	82	136	108	5	48		21	49.2	19	SS-UC209		1.92
SS-UCHA209-26	1-5/8										SS-UC209-26		2.02
SS-UCHA209-27	1-11/16	3-15/64	5-23/64	4-1/4	13/64	1-57/64	G-1	53/64	1.9370	0.748	SS-UC209-27	SHA209	1.98
SS-UCHA209-28	1-3/4										SS-UC209-28		1.94
SS-UCHA210	50	83	142	118	5	48		21	51.6	19	SS-UC210		1.90
SS-UCHA210-29	1-13/16										SS-UC210-29		2.02
SS-UCHA210-30	1-7/8	3-17/64	5-19/32	4-41/64	13/64	1-57/64	G-1	53/64	2.0315	0.748	SS-UC210-30	SHA210	1.97
SS-UCHA210-31	1-15/16										SS-UC210-31		1.92
SS-UCHA210-32	2										SS-UC210-32		1.88
SS-UCHA211	55	87	150	126	7	60		25	55.6	22.2	SS-UC211		2.61
SS-UCHA211-32	2										SS-UC211-32		2.76
SS-UCHA211-33	2-1/16	3-27/64	5-29/32	4-61/64	9/32	2-23/64	G1-1/4	63/64	2.1890	0.874	SS-UC211-33	SHA211	2.70
SS-UCHA211-34	2-1/8										SS-UC211-34		2.65
SS-UCHA211-35	2-3/16										SS-UC211-35		2.59
SS-UCHA212	60	102	173	142	9	60		28	65.1	25.4	SS-UC212		3.54
SS-UCHA212-36	2-1/4										SS-UC212-36		3.67
SS-UCHA212-37	2-5/16	4-1/64	6-13/16	5-19/32	23/64	2-23/64	G1-1/4	1-7/64	2.5630	1.000	SS-UC212-37	SHA212	3.59
SS-UCHA212-38	2-3/8										SS-UC212-38		3.52
SS-UCHA212-39	2-7/16										SS-UC212-39		3.54
SS-UCHA213	65	117	200	166	9.5	70		32	65.1	25.4	SS-UC213		5.80
SS-UCHA213-40	2-1/2	4-39/64	7-7/8	6-17/32	3/8	2-3/4	G1-1/2	1-17/64	2.5630	1.000	SS-UC213-40	SHA213	5.89
SS-UCHA213-41	2-9/16										SS-UC213-41		5.80
SS-UCHA214	70	117	200	166	9.5	70		32	74.6	30.2	SS-UC214		
SS-UCHA214-42	2-5/8										SS-UC214-42		
SS-UCHA214-43	2-11/16	4-39/64	7-7/8	6-17/32	3/8	2-3/4	G1-1/2	1-17/64	2.9370	1.189	SS-UC214-43	SHA214	5.67
SS-UCHA214-44	2-3/4										SS-UC214-44		

SS-SAPP2 (SA2-Fitted)

Pressed Housing Pillow Blocks (Light-duty)

SS-SBPP2 (SB2-Fitted)

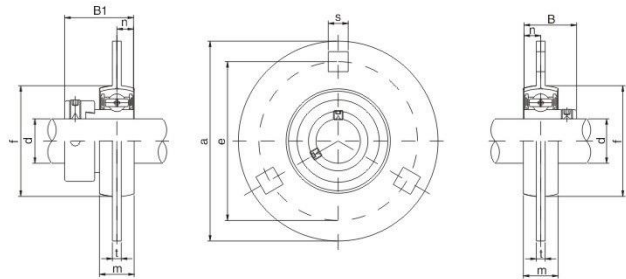


Unit No.	Dimensions mm in.								Bolt used mm in.	SS-SAPP				SS-SBPP				Housing No.
	d	h	a	e	b	s	g	w		B ₁	n	Bearing No.	Weight (kg)	B	n	Bearing No.	Weight (kg)	
SS-SAPP SS-SBPP 201	12	22.2	86	68	25	9.5	3.2	43.8	M8	28.6	6	SS-SA201		22	6	SS-SB201		
201-8	1/2											SS-SA201-8				SS-SB201-8		
202	15											SS-SA202				SS-SB202		
202-9	9/16	7/8	3-3/8	2-43/64	63/64	3/8	0.126	1-23/32	5/16	1.1260	0.2362	SS-SA202-9	0.19	0.8661	0.2362	SS-SB202-9	0.16	SPP203
202-10	5/8											SS-SA202-10				SS-SB202-10		
203	17											SS-SA203				SS-SB203		
203-11	1 1/16											SS-SA203-11				SS-SB203-11		
SS-SAPP SS-SBPP 204	20	25.4	96	76	32	9.5	3.2	50.5	M8	31	7	SS-SA204		25	7	SS-SB204		
204-12	3/4	1	3-27/32	2-63/64	1-1/4	3/8	0.126	1-63/64	5/16	1.2204	0.2756	SS-SA204-12	0.23	0.9843	0.2756	SS-SB204-12	0.23	SPP204
SS-SAPP SS-SBPP 205	25	28.6	108	86	32	11.5	4	56.6	M10	31	7.5	SS-SA205		27	7.5	SS-SB205		
205-13	13/16											SS-SA205-13				SS-SB205-13		
205-14	7/8	1-1/8	4-1/4	3-25/64	1-1/4	29/64	0.157	2-15/64	3/8	1.2204	0.2953	SS-SA205-14	0.32	1.0630	0.2953	SS-SB205-14	0.28	SPP205
205-15	15/16											SS-SA205-15				SS-SB205-15		
205-16	1											SS-SA205-16				SS-SB205-16		
SS-SAPP SS-SBPP 206	30	33.3	117	95	38	11.5	4	66.3	M10	35.7	8	SS-SA206		30	8	SS-SB206		
206-17	1-1/16											SS-SA206-17				SS-SB206-17		
206-18	1-1/8	1-5/16	4-39/64	3-47/64	1-1/2	29/64	0.157	2-39/64	3/8	1.4055	0.3150	SS-SA206-18	0.50	1.1811	0.3150	SS-SB206-18	0.47	SPP206
206-19	1-3/16											SS-SA206-19				SS-SB206-19		
206-20	1-1/4											SS-SA206-20				SS-SB206-20		
SS-SAPP SS-SBPP 207	35	39.7	129	106	42	11.5	4.6	78	M10	38.9	8.5	SS-SA207		32	8.5	SS-SB207		
207-20	1-1/4											SS-SA207-20				SS-SB207-20		
207-21	1-5/16	1-9/16	5-5/64	4-5/32	1-21/32	29/64	0.181	3-1/8	3/8	1.5315	0.3346	SS-SA207-21	0.71	1.2598	0.3346	SS-SB207-21	0.57	SPP207
207-22	1-3/8											SS-SA207-22				SS-SB207-22		
207-23	1-7/16											SS-SA207-23				SS-SB207-23		

SS-SAPF2
(SA2-Fitted)

Pressed Housing Flange Linits
(Light-duty)

SS-SBPF2
(SB2-Fitted)

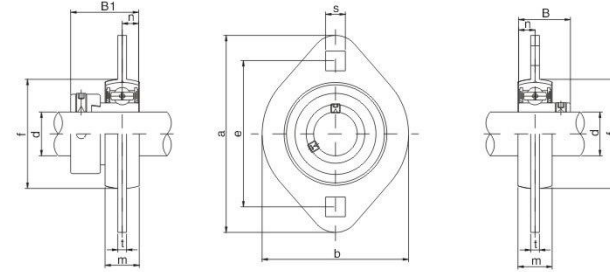


Unit No.	Dimensions mm in.								Bolt used mm in.	SS-SAPF				SS-SBPF				Housing No.
	d	a	e	m	s	t	f (min)	B ₁		n	Bearing No.	Weight (kg)	B	n	Bearing No.	Weight (kg)		
SS-SAPF SS-SBPF 201	12	81	63.5	14	7.1	4	49	M8	28.6	6	SS-SA201	22	6	SS-SB201				
201-8	1/2										SS-SA201-8			SS-SB201-8				
202	15										SS-SA202			SS-SB202				
202-9	9/16	3-3/16	2-1/2	9/16	9/32	0.157	1-59/64	5/16	1.1260	0.2362	SS-SA202-9	0.3	0.8661	0.2362	SS-SB202-9	0.27		
202-10	5/8										SS-SA202-10			SS-SB202-10				
203	17										SS-SA203			SS-SB203				
203-11	11/16										SS-SA203-11			SS-SB203-11				
SS-SAPF SS-SBPF 204	20	90	71.5	16	9	4	56	M8	31	7	SS-SA204	25	7	SS-SB204				
204-12	3/4	3-35/64	2-13/16	5/8	23/64	0.157	2-13/64	5/16	1.2204	0.2756	SS-SA204-12	0.33	0.9843	0.2756	SS-SB204-12	0.33		
SS-SAPF SS-SBPF 205	25	95	76	18	9	4	60	M8	31	7.5	SS-SA205	27	7.5	SS-SB205				
205-13	13/16										SS-SA205-13			SS-SB205-13				
205-14	7/8	3-3/4	2-63/64	23/32	23/64	0.157	2-23/64	5/16	1.2204	0.2953	SS-SA205-14	0.42	1.0630	0.2953	SS-SB205-14	0.38		
205-15	15/16										SS-SA205-15			SS-SB205-15				
205-16	1										SS-SA205-16			SS-SB205-16				
SS-SAPF SS-SBPF 206	30	113	90.5	18	11	5.2	71	M10	35.7	8	SS-SA206	30	8	SS-SB206				
206-17	1-1/16										SS-SA206-17			SS-SB206-17				
206-18	1-1/8	4-7/16	3-9/16	23/32	7/16	0.205	2-51/64	3/8	1.4055	0.3150	SS-SA206-18	0.65	1.1811	0.3150	SS-SB206-18	0.52		
206-19	1-3/16										SS-SA206-19			SS-SB206-19				
206-20	1-1/4										SS-SA206-20			SS-SB206-20				
SS-SAPF SS-SBPF 207	35	122	100	20	11	5.2	81	M10	38.9	8.5	SS-SA207	32	8.5	SS-SB207				
207-20	1-1/4										SS-SA207-20			SS-SB207-20				
207-21	1-5/16	4-13/16	3-15/16	25/32	7/16	0.205	3-3/16	3/8	1.5315	0.3346	SS-SA207-21	0.9	1.2598	0.3346	SS-SB207-21	0.82		
207-22	1-3/8										SS-SA207-22			SS-SB207-22				
207-23	1-7/16										SS-SA207-23			SS-SB207-23				
SS-SAPF SS-SBPF 208	40	148	119	21	13.5	6.8	91	M12	43.7	9	SS-SA208	34	9	SS-SB208				
208-24	1-1/2	5-13/16	4-11/16	13/16	17/32	0.268	3-37/64	1/2	1.7205	0.3543	SS-SA208-24	1.15	1.3386	0.3543	SS-SB208-24	1.1		
208-25	1-9/16										SS-SA208-25			SS-SB208-25				

SS-SAPFL2
(SA2-Fitted)

Pressed Housing Flange Units
(Light-duty)

SS-SBPFL2
(SB2-Fitted)

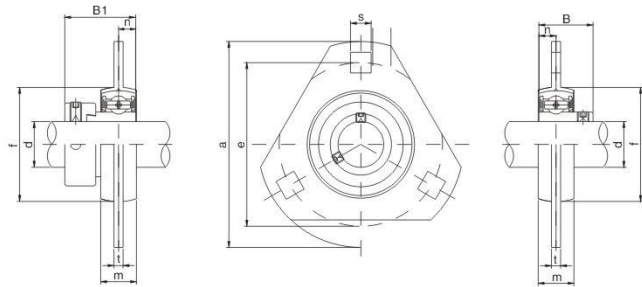


Unit No.	Dimensions mm in.								Bolt used mm in.	SS-SAPFL				SS-SBPFL				Housing No.
	d	a	e	b	m	S	t	f (min)		B ₁	n	Bearing No.	Weight (kg)	B	n	Bearing No.	Weight (kg)	
SS-SAPFL SS-SBPFL 201	12	81	63.5	59	14	7.1	4	49	M6	28.6	6	SS-SA201	22	6	SS-SB201			
201-8	1/2											SS-SA201-8			SS-SB201-8			
202	15											SS-SA202			SS-SB202			
202-9	9/16	3-3/16	2-1/2	2-21/64	9/16	1-59/64	0.157	1-59/64	1/4	1.1260	0.2362	SS-SA202-9	0.22	0.8661	0.2362	SS-SB202-9	0.19	
202-10	5/8											SS-SA202-10			SS-SB202-10			
203	17											SS-SA203			SS-SB203			
203-11	11/16											SS-SA203-11			SS-SB203-11			
SS-SAPFL SS-SBPFL 204	20	90	71.5	67	16	9	4	56	M8	31	7	SS-SA204	25	7	SS-SB204			
204-12	3/4	3-35/64	2-13/16	2-41/64	5/8	23/64	0.157	2-13/64	5/16	1.2204	0.2756	SS-SA204-12	0.24	0.9843	0.2756	SS-SB204-12	0.24	
SS-SAPFL SS-SBPFL 205	25	95	76	71	18	9	4	60	M8	31	7.5	SS-SA205	27	7.5	SS-SB205			
205-13	13/16											SS-SA205-13			SS-SB205-13			
205-14	7/8	3-3/4	2-63/64	2-51/64	23/32	23/64	0.157	2-23/64	5/16	1.2204	0.2953	SS-SA205-14	0.32	1.0630	0.2953	SS-SB205-14	0.28	
205-15	15/16											SS-SA205-15			SS-SB205-15			
205-16	1											SS-SA205-16			SS-SB205-16			
SS-SAPFL SS-SBPFL 206	30	113	90.5	84	18	11	5.2	71	M10	35.7	8	SS-SA206	30	8	SS-SB206			
206-17	1-1/16											SS-SA206-17			SS-SB206-17			
206-18	1-1/8	4-7/16	3-9/16	3-5/16	23/32	7/16	0.205	2-51/64	3/8	1.4055	0.3150	SS-SA206-18	0.41	1.1811	0.3150	SS-SB206-18	0.38	
206-19	1-3/16											SS-SA206-19			SS-SB206-19			
206-20	1-1/4											SS-SA206-20			SS-SB206-20			
SS-SAPFL SS-SBPFL 207	35	122	100	94	20	11	5.2	81	M10	38.9	8.5	SS-SA207	32	8.5	SS-SB207			
207-20	1-1/4											SS-SA207-20			SS-SB207-20			
207-21	1-5/16	4-13/16	3-15/16	3-45/64	25/32	7/16	0.205	3-3/16	3/8	1.5315	0.3346	SS-SA207-21	0.52	1.2598	0.3346	SS-SB207-21	0.50	
207-22	1-3/8											SS-SA207-22			SS-SB207-22			
207-23	1-7/16											SS-SA207-23			SS-SB207-23			
SS-SAPFL SS-SBPFL 208	40	148	119	100	21	13.5	6.8	91	M12	43.7	9	SS-SA208	34	9	SS-SB208			
208-24	1-1/2	5-13/16	4-11/16	3-15/16	13/16	17/32	0.268	3-37/64	1/2	1.7205	0.3543	SS-SA208-24	0.83	1.3386	0.3543	SS-SB208-24	0.80	
208-25	1-9/16											SS-SA208-25			SS-SB208-25			

SS-SAPFT2
(SA2-Fitted)

Pressed Hosing Flange Units
(Light-duty)

SS-SBPFT2
(SB2-Fitted)



Unit No.	Dimensions mm in.								Bolt used mm in.	SS-SAPFT				SS-SBPFT				Housing No.
	d	a	e	w	m	s	t	f (min)		B1	n	Bearing No.	Weight (kg)	B	n	Bearing No.	Weight (kg)	
SS-SAPFT SS-SBPFT 201	12	81	63.5	28.5	14	7.1	4	49	M6	28.6	6	SS-SA201		22	6	SS-SB201		
201-8	1/2											SS-SA201-8				SS-SB201-8		
202	15											SS-SA202				SS-SB202		
202-9	9/16	3-3/16	2-1/2	1-1/8	9/16	9/32	0.157	1-59/64	1/4	1.1260	0.2362	SS-SA202-9	0.26	0.8661	0.2362	SS-SB202-9	0.23	SPFT203
202-10	5/8											SS-SA202-10				SS-SB202-10		
203	17											SS-SA203				SS-SB203		
203-11	11/16											SS-SA203-11				SS-SB203-11		
SS-SAPFT SS-SBPFT 204	20	90	71.5	33	16	9	4	56	M8	31	7	SS-SA204		25	7	SS-SB204		
204-12	3/4	3-35/64	2-13/16	1-19/64	5/8	23/64	0.157	2-13/64	5/16	1.2204	0.2756	SS-SA204-12	0.28	0.9843	0.2756	SS-SB204-12	0.28	SPFT204
SS-SAPFT SS-SBPFT 205	25	95	76	35	18	9	4	60	M8	31	7.5	SS-SA205		27	7.5	SS-SB205		
205-13	13/16											SS-SA205-13				SS-SB205-13		
205-14	7/8	3-3/4	2-63/64	1-3/8	23/32	23/64	0.157	2-23/64	5/16	1.2204	0.2953	SS-SA205-14	0.36	1.0630	0.2953	SS-SB205-14	0.36	SPFT205
205-15	15/16											SS-SA205-15				SS-SB205-15		
205-16	1											SA205-16				SS-SB205-16		
SS-SAPFT SS-SBPFT 206	30	113	90.5	40	18	11	5.2	71	M10	35.7	8	SS-SA206		30	8	SS-SB206		
206-17	1-1/16											SS-SA206-17				SS-SB206-17		
206-18	1-1/8	4-7/16	3-9/16	1-37/64	23/32	7/16	0.205	2-51/64	3/8	1.4055	0.3150	SS-SA206-18	0.58	1.1811	0.3150	SS-SB206-18	0.55	SPFT206
206-19	1-3/16											SS-SA206-19				SS-SB206-19		
206-20	1-1/4											SS-SA206-20				SS-SB206-20		
SS-SAPFT SS-SBPFT 207	35	122	100	44.5	20	11	5.2	81	M10	38.9	8.5	SS-SA207		32	8.5	SS-SB207		
207-20	1-1/4											SS-SA207-20				SS-SB207-20		
207-21	1-5/16	4-13/16	3-15/16	1-3/4	25/32	7/16	0.205	3-3/16	3/8	1.5315	0.3346	SS-SA207-21	0.82	1.2598	0.3346	SS-SB207-21	0.74	SPFT207
207-22	1-3/8											SS-SA207-22				SS-SB207-22		
207-23	1-7/16											SS-SA207-23				SS-SB207-23		

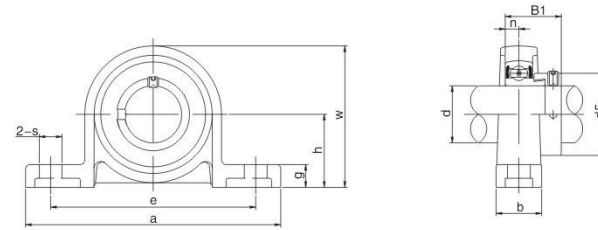
SILVER SERIES

SUP (Light-duty)
SUFL

- Rustproof housings made with a special alloy or stainless steel AISI 304
- Bearings are high carbon chromium bearing steel or stainless steel AISI 440C

SUP 000 type*

PILLOW BLOCKS
Extra Narrow Width Eccentric Collar Locking

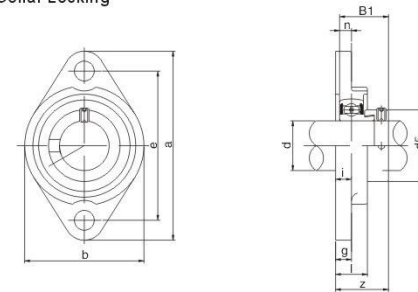


Unit No.	Dimensions mm in.										Bolt Used mm	Bearing No.	Housing No.	Weight (kg)	
	d	h	a	e	b	s	g	w	B1	n					ds
SUP000	10	18	67	53	16	7	6	35	17.5	4	17	M6	SU000	P000	0.08
SUP001	12	19	71	56	16	7	6	38	17.5	4	19	M6	SU001	P001	0.09
SUP002	15	22	80	63	16	7	7	43	18.5	4.5	22	M6	SU002	P002	0.13
SUP003	17	24	85	67	18	7	7	47	20.5	5	25	M6	SU003	P003	0.16
SUP004	20	28	100	80	20	10	9	55	24.5	6	30	M8	SU004	P04-5	0.23
SUP005	25	32	112	90	20	10	10	62	25.5	6	36	M8	SU005	P05-6	0.29
SUP006	30	36	132	106	26	13	11	70	26.5	6.5	42	M10	SU006	P06-7	0.45

*ALSO AVAILABLE WITH STAINLESS STEEL COVERS.

SUFL 000 type*

WO-BOLT FLANGE UNITS
Extra Narrow Width Eccentric Collar Locking



Unit No.	Dimensions mm in.										Bolt Used mm	Bearing No.	Housing No.	Weight (kg)		
	d	a	e	l	g	l	s	b	B1	n					ds	
SUFL000	10	60	45	5.5	5.5	11.5	7	36	19	17.5	4	17	M6	SU000	FL000	0.06
SUFL001	12	63	48	5.5	5.5	11.5	7	38	19	17.5	4	19	M6	SU001	FL001	0.07
SUFL002	15	67	53	6.5	6.5	13	7	42	20.5	18.5	4.5	22	M6	SU002	FL002	0.10
SUFL003	17	71	56	7	7	14	7	46	22.5	20.5	5	25	M6	SU003	FL003	0.13
SUFL004	20	90	71	8	8	16	10	55	26.5	24.5	6	30	M8	SU004	FL04-5	0.20
SUFL005	25	95	75	8	8	16	10	60	27.5	25.5	6	36	M8	SU005	FL05-6	0.24
SUFL006	30	112	85	9	9	18	13	70	29	26.5	6.5	42	M10	SU006	FL06-7	0.35
SUFL007	35	122	95	10	10	20	13	80	32.5	29.5	7	48	M10	SU007	FL07-8	0.50

*ALSO AVAILABLE WITH STAINLESS STEEL COVERS.

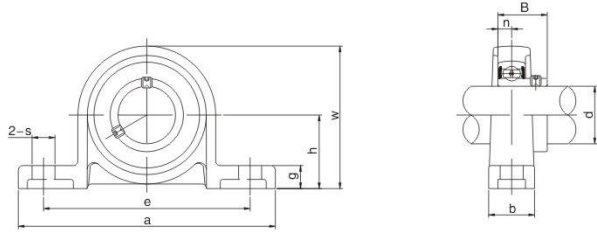
SILEVER SERIES

- Rustproof housings made with a special alloy or stainless steel AISI 304
- Bearings are high carbon chromium bearing steel or stainless steel AISI 440C

SKP 000 type*

PILLOWBLOCKS

Extra Narrow Width Eccentric Collar Locking



SKP (Lihgt-duty)
SKFL

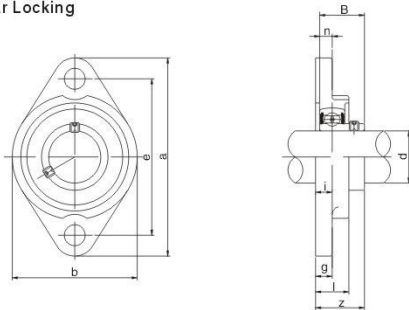
Unit No.	Dimensions mm in.											Bolt Used mm	Bearing No.	Housing No.	Weight (kg)	
	d	h	a	e	b	s	g	w	B ₁	n						
SKP000	10	18	67	53	16	7	6	35	17.5	4			M6	SK000	P000	0.07
SKP001	12	19	71	56	16	7	6	38	14.5	4				SK001	P001	0.09
SKP002	15	22	80	63	16	7	7	43	16.5	4.5				SK002	P002	0.13
SKP003	17	24	85	67	18	7	7	47	17.5	5	M6			SK003	P003	0.16
SKP004	20	28	100	80	20	10	9	55	21	6	M8			SK004	P04-5	0.23
SKP005	25	32	112	90	20	10	10	62	22.5	6	M8			SK005	P05-6	0.29
SKP006	30	36	132	106	26	13	11	70	24.5	6.5	M10			SK006	P06-7	0.45

*ALSO AVAILABLE WITH STAINLESS STEEL COVERS.

SKFL 000 type*

WO-BOLT FLANGE UNITS

Extra Narrow Width Eccentric Collar Locking

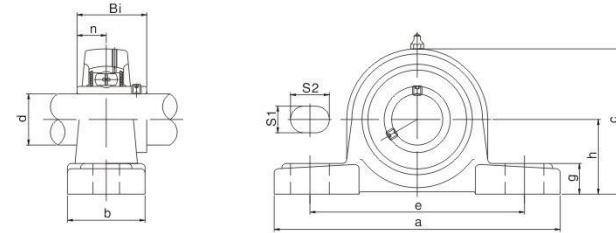


Unit No.	Dimensions mm in.											Bolt Used mm	Bearing No.	Housing No.	Weight (kg)	
	d	a	e	i	g	l	s	b	z	B ₁	n					
SKFL000	10	60	45	5.5	5.5	11.5	7	36	15.5	14	4		M6	SK000	FL000	0.06
SKFL001	12	63	48	5.5	5.5	11.5	7	38	16	14.5	4			SK001	FL001	0.07
SKFL002	15	67	53	6.5	6.5	13	7	42	18.6	16.5	4.5			SK002	FL002	0.10
SKFL003	17	71	56	7	7	14	7	46	19.5	17.5	5	M6		SK003	FL003	0.13
SKFL004	20	90	71	8	8	16	10	55	23	21	6	M8		SK004	FL04-5	0.20
SKFL005	25	95	75	8	8	16	10	60	24.5	22.5	6	M8		SK005	FL05-6	0.25
SKFL006	30	112	85	9	9	18	13	70	27	24.5	6.5	M10		SK006	FL06-7	0.35

*ALSO AVAILABLE WITH STAINLESS STEEL COVERS.

BLACK GREEN WHITE

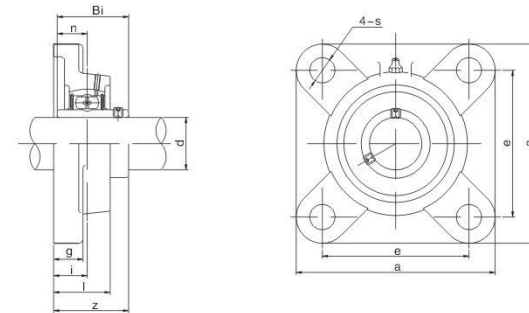
PPL2
FPL2



Thermoplastic Pillow Block Units

TYPE	d (mm)	h	a	e	b	S ₁	S ₂	g	c	Bi	n	w (kg)
PPL204	20	33.3	127	95	38	11	14	14.2	65.5	31	12.7	0.13
PPL205	25	36.5	140.5	105	38	11	14	14.5	71	34	14.3	0.14
PPL206	30	42.9	163	119	46	14	18	17.8	84	38.1	15.9	0.24
PPL207	35	47.6	168	127	48	14	18	18	94.5	42.9	17.5	0.27
PPL208	40	49.2	184	137	54	14	18	19.5	101	49.2	19	0.35
PPL209	45	54	192	146	54	17	20	23	106	49.2	19	0.41
PPL210	50	57.2	206	159	60	17	20	23	114	51.6	19	0.47
PPL211	55	63.5	219	171	60	20	25	23	127	55.6	22.2	

BLACK GREEN WHITE

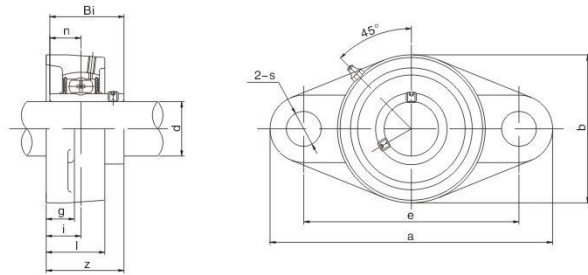


Thermoplastic Square Flange Units

TYPE	d (mm)	a	e	g	L	s	z	B ₁	n	i	w (kg)
FPL204	20	86	63.5	13.4	27.8	11	34.6	31	12.7	16.3	0.12
FPL205	25	95	70	14.3	28.5	11	36.7	34	14.3	17	0.15
FPL206	30	107	83	14.3	31.5	11	41.2	38.1	15.9	19	0.18
FPL207	35	118	92	15.5	34.5	13	46.9	42.9	17.5	21.5	0.25
FPL208	40	130	102	17	36.5	14	53.2	49.2	19	23	0.36
FPL209	45	137	105	19	41	17	54.2	49.2	19	24	0.42
FPL210	50	143	111	21	43	17	57.6	51.6	19	25	0.49
FPL211	55	162	130	21	43	19		55.6	22.2	27	

BLACK GREEN WHITE

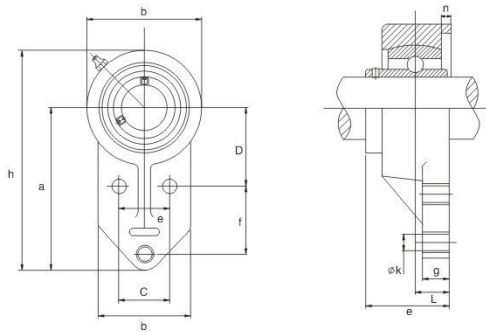
NFL2
FB2



Thermoplastic 2 Bolt Flange Units

TYPE	d(mm)	a	e	b	g	L	s	z	Bi	n	i	w(kg)
NFL204	20	113	90	65	13.4	26.5	11	33.3	31	12.7	15	0.08
NFL205	25	131	99	70	14.3	28	11	36.2	34	14.3	16.5	0.11
NFL206	30	148	117	80	14.3	30.5	11	40.2	38.1	15.9	18	0.13
NFL207	35	164	130	90	15.5	32	13	44.4	42.9	17.5	19	0.16
NFL208	40	176	144	100	17	35	14	51.7	49.2	19	21.5	0.22
NFL209	45	198	149	108	21	41	17	54.2	49.2	19	24	0.26
NFL210	50	197	157	115	21	43	17	57.6	51.6	19	25	0.31
NFL211	55	226	185	129	20	41	19		55.6	22.2	28	

BLACK GREEN WHITE

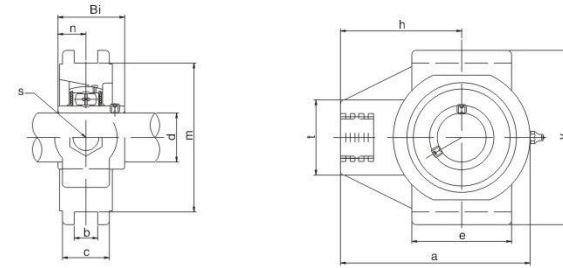


Thermoplastic Housed 3-Bolt Flange Units

TYPE	d(mm)	a	b	c	D	e	f	g	h	l	k	n	w(kg)
FB201	12	76.2	62	38.1	42.9	33.7	22.2	11.4	108	63.5	10.7	12.7	0.08
FB202	15	76.2	62	38.1	42.9	33.7	22.2	11.4	108	63.5	10.7	12.7	0.08
FB203	17	76.2	62	38.1	42.9	33.7	22.2	11.4	108	63.5	10.7	12.7	0.08
FB204	20	76.2	62	38.1	42.9	33.7	22.2	11.4	108	63.5	10.7	12.7	0.08
FB205	25	85.7	63.5	41.3	46	41.2	28.6	11.4	120.6	70	10.7	14.3	0.11
FB206	30	96.5	76	47.6	52.4	41.5	31.8	13.3	138.5	83	10.7	15.9	0.16
FB207	35	109.5	98	50.8	60.3	47.1	31.8	16.1	157	95	13.1	17.5	0.23

BLACK GREEN WHITE

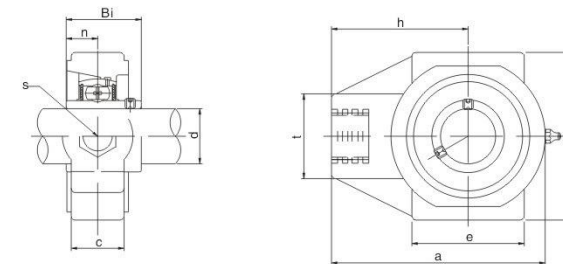
TP2
HP2



Thermoplastic Housed Take-up Units

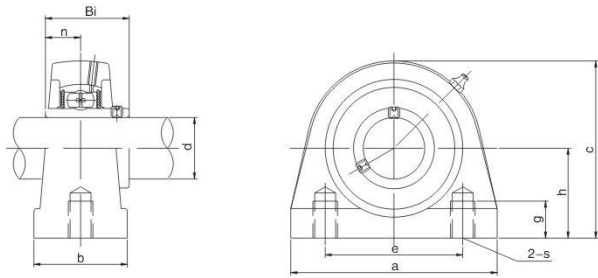
TYPE	d(mm)	a	c	b	h	m	t	v	e	Bi	n	s	w(kg)
TP204	20	99	27.5	12	64	76	36	88	47	31	12.7	M16	0.18
TP205	25	99	27.5	12	64	76	36	88	47	34	14.3	M16	0.17
TP206	30	125	34.5	12	76	89	40	102	63	38.4	15.9	M16	0.28
TP207	35	125	34.5	12	76	89	40	102	63	42.9	17.5	M16	0.27
TP208	40	140	34.5	16	85	102	40	114	80	49.2	19	M16	0.36
TP209	45	149	40	16	90	102	50	117	85	49.2	19	M20	0.41
TP210	50	149	40	16	90	102	50	117	85	51.6	19	M20	0.47

BLACK GREEN WHITE



Thermoplastic Housed Hanger Units

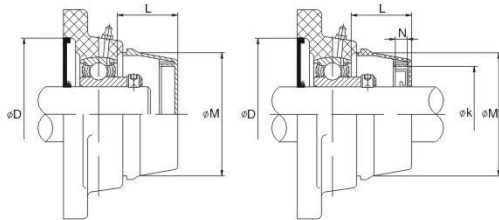
TYPE	d(mm)	a	c	h	m	s	t	e	Bi	n	w(kg)
HP204	20	99	27.5	63.5	65	M16	36	47	31	12.7	0.18
HP205	25	99	27.5	63.5	74	M16	36	47	34	14.3	0.17
HP206	30	125	34.5	76	90	M16	40	63	38.1	15.9	0.28
HP207	35	125	34.5	76	90	M16	40	63	42.9	17.5	0.27
HP208	40	140	34.5	85	100	M16	40	80	49.2	19	0.36
HP209	45	149	40	90	110	M20	50	85	49.2	19	0.41
HP210	50	149	40	90	110	M20	50	85	51.6	19	0.47



Thermoplastic Tap-Base Units

TYPE	d (mm)	a	e	h	b	s	c	Bi	n	g	W (kg)
PA204	20	76	52	33.3	38	M8	64	31	12.7	13	0.09
PA205	25	84	56	36.5	38	M10	72	34.1	14.3	13	0.12
PA206	30	94	66	42.9	48	M10	84	38.1	15.9	16	0.18
PA207	35	110	80	47.6	48	M10	95	49.2	17.5	18	0.26
PA208	40	116	84	49.2	54	M12	100	49.2	19	20	0.30
PA209	45	120	90	54.2	54	M12	108	49.2	19	20	0.35
PA210	50	130	94	57.2	60	M16	116	51.6	19	22	0.45

Plastic Covers (Open/Close)

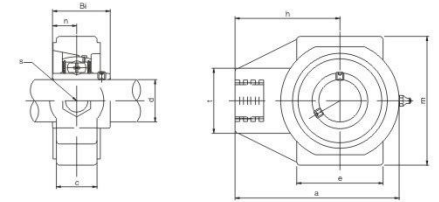


SIZE	DIM	d	b	D
204		20	6	52
205		25	6	62
206		30	6	72
207		35	6	82
208		40	6	88
209		45	6	93
210		50	6	98

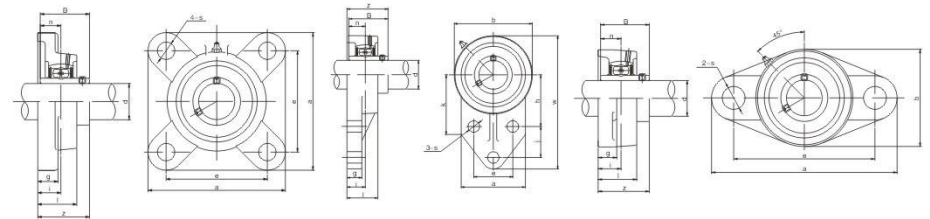
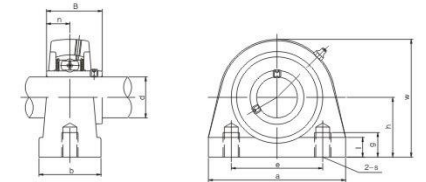
Shaft diameter		Dimensions(mm)						
mm	inch	K	N	L	M	D	b	
12	1/2	32	7	23	50	52	6	
15	9/16, 5/8	32	7	23	50	52	6	
17	11/16	32	7	23	50	52	6	
20	3/4	32	7	23	50	52	6	
25	13/16, 7/8, 15/16, 1	37	7	25	55	62	6	
30	1 1/16, 1 1/8, 1 3/16, 1 1/4	42	7	30	64	72	6	
35	1 1/4, 1 5/16, 1 3/8, 1 7/16	47	7	32	74.5	82	6	
40	1 1/2, 1 9/16	52	7	37	84	88	6	
45	1 5/8, 1 11/16, 1 3/4	57	7	41	89	93	6	
50	1 3/4, 1 7/8, 1 15/16, 2	62	7	47	94	98	6	

THE TECHNOLOGY REQUEST OF PLASTIC HOUSTING

Housing No TP / HP	Deviations A	Deviations H
204	+200 0	0 -500
205		
206		
207		
208		
209		
210	+300 0	0 -800
211		



Housing No			Deviations A	Deviations H
P	PA	TB		
204	204	204	± 150	± 700
205	205	205		
206	206	206		
207	207	207		
208	208	208		± 1000
209	209	209		
210	210	210		
211	211	211		
			± 200	



Housing No			Deviations A	Deviations H
F	FL	FB		
204	204	204	± 500	± 700
205	205	205		
206	206	206		
207	207	207		
208	208	208		
209	209	209		
210	210	210		
211	211	211		

RLM stainless steel bearings with shields or seals are supplied with grease of the brand of Shell Alvania No. 2 or Chavron SRI-2 as standard requirement .Upon request, the ball bearing can be lubricated with the other grease or oil for any specification. The customers should specify their requirement in their purchase orders.

SPECIFICATIONS FOR GENERAL PURPOSE GREASE(1)

Company Brand	Brand	Viscosity	Base oil	Drop point°C	Consistency	Operating temperature range°C	Selection criteria	Remarks
shell	Alvania No.2	Lithium	Mineral	182	272	-25 ~ +120	normal temperature grease	
	Alvania No.3	Lithium	Mineral	183	233	-20 ~ +135	normal temperature grease	
	Alvania RA	Lithium	Mineral	183	252	-25 ~ +120	normal temperature grease	
	Alvania EP2	Lithium	Mineral	185	276	-10 ~ +100	normal temperature grease	
	Cassida RLS00	Compounds aluminum base	Mineral	240	280	-30 ~ +100	high-low temperature grease	Meets the requirements of FDA-regulations
	Cassida RLS1	Compounds aluminum base	Mineral	≥260	288	-70 ~ +150	low temperature grease	
	Cassida RLS2	Compounds aluminum base	Mineral	195	266	-50 ~ +150	low noise-high speed grease	
Kluber	Isoflex PDB38CX100	Lithium	Ester	-	-	-70 ~ +120	low-temperature grease	Food grease
	Isoflex LDS18 SPEzialA	Lithium	Diester	190	280	-60 ~ +130	low-temperature grease	
	Isoflex super LDS18	Lithium	Diester	190	280	-60 ~ +130	low-temperature grease	
	Isoflex Topas NB52	Barium	Synthetic hydrocarbon	240	280	-60 ~ +170	high-low temperature grease	
	Barrierta L55/2	PTFE	Fluorinated	-	280	-35 ~ +260	high-low temperature grease	
	Staburags NBU12	Barium	Mineral	220	270	-35 ~ +150	normal temperature grease	
	Isoflex NBU15	Barium	Diester Mineral	220	280	-40 ~ +130	normal temperature grease	
	PlexBE31-222	Gathium	-	220	280	-20 ~ +150	normal temperature grease	Food grease
	Asonic GHY72	Polyhamstoff	Ester Mineral	250	250 ~ 280	-40 ~ +180	high temperature low noise grease	

RLM stainless steel bearings with shields or seals are supplied with grease of the brand of Shell Alvania No. 2 or Chavron SRI-2 as standard requirement .Upon request, the ball bearing can be lubricated with the other grease or oil for any specification. The customers should specify their requirement in their purchase orders.

SPECIFICATIONS FOR GENERAL PURPOSE GREASE(2)

Company Brand	Brand	Viscosity	Base oil	Drop point°C	Consistency	Operating temperature range°C	Selection criteria	Remarks
Exxon	Beacon325	Lithium	Diester	193	290	-60 ~ +120	low temperature grease	
	Andok B	Nathium	Mineral	260	280	-40 ~ +120	normal temperature grease	
	UNIREX N3	Lithium Comple	Mineral	250	235	-40 ~ +180	high-low temperature grease	
	Arapen RB300	Lithium Calcium	Mineral	175	300	-30 ~ +100	normal temperature grease	
	Polyrex EP2	Urea	Mineral	280	280	-40 ~ +180	high temperature low noise grease	
Kyodo Yushi	Multemp PS2	Lithium	Diester	189	280	-50 ~ +110	low temperature grease	
	Multemp SRL	Lithium	Ester	191	245	-40 ~ +150	low noise grease	
	Multemp SC-A	Urea	-	≥260	280	0 ~ +160	normal temperature grease	
	Multemp SB-M	Diurea	Ester	220	260	-40 ~ +200	high temperature high speed grease	
Caltex	Chevron SRI-2	Urea	Mineral	243	280	-30 ~ +150	high temperature grease	good-water resistance
	RPM Greas SRI-2	Polyurea	Mineral	243	280	-30 ~ +150	high temperature high speed grease	
	RPM Greas SRI OEM	Polyurea	Mineral	243	280	-30 ~ +150	low temperature high speed grease	
Great Wall China	Great wall Hths	Lithium	Mineral	305	281	-40 ~ +160	high-low temperature grease	
	Great wall low noise grease	Lithium	Mineral	196	281	-20 ~ +120	normal temperature grease	
Mobil	Mobil FM222	Lithium	-	216	280	-30 ~ +150	normal temperature grease	Meets the requirements of FDA-regulations
	Mobilux2	Lithium	Mineral	190	280	-20 ~ +120	normal temperature grease	
	Mobil22	Lithium	Diester Mineral	192	274	-50 ~ +140	low temperature grease	
	Mobil28	Bentonite	Synthetic hydrocarbon	≥260	280	-60 ~ +180	high-low temperature grease	

The units of deep groove ball bearing and ball bearing are normally made of stainless steel 9Cr18Mo(AISI440C),but other materials are available for specific use in order.

Material

PART NAME	MATERIAL			
Bearing Rings	AISI440C 9Cr18Mo	AISI440C 9Cr18	AISI304 0Cr18Ni9	AISI316 0Cr17Ni12Mo2
Ball	AISI440C	AISI440C	AISI304	AISI316
Retainer	AISI304	AISI304	RS ZZ	ZZ AISI304

The chemical composition of different stainless steel numbers

Stainless steel NO.	C%	Cr%	Si%	Mn%	S%	P%	Mo%	Ni%
AISI440C	0.90-1.00	17-19	≤0.8	≤0.8	≤0.03	≤0.035		
AISI440C	0.95-1.10	16-18	≤0.8	≤0.8	≤0.03	≤0.035	≤0.75	
AISI304(304L)	≤0.07	17-19	≤1	≤2	≤0.03	≤0.035		8-11
AISI316(316L)	≤0.08	16-18.5	≤1	≤2	≤0.03	≤0.035	2-3	10-14

The contrast of stainless steel steel number of each country

Country	China	U.S.A	Germany		Japan	France
			DIN	W-Nr		
Bearing Steel NO.	9Cr18	AISI440C	X90CrMoV18	1.4112	SUS440C	Z105CrMo17
	9Cr18Mo	AISI440C	X105CrMo17	1.4125	SUS440C	Z105CrMo17
	0Cr18Ni9	AISI304	X5CrNi18-10	1.4301	SUS304	Z7CN18-09
	0Cr17Ni12Mo2	AISI316	X5CrNiMo17-12-2	1.4401	SUS316	Z7CND18-12-03

Characteristics of Sealing

Characteristics	type	Two steel shields	Two rubber seals	In circles double side V trench type
low friction torque		A	A	B
high speed		A	A	B
grease seal		B	A	AA
dustproof		B	A	AA
waterproof		C	B	A

Note:AA-utmost excel lent; A-excel lent; B-good; C-bad.

The material of seal

Rubber material	Butane nitrile rubber	Poly acrylate rubber	Silicon rubber	Fluorine rubber	Chlorine butane nitrile rubber	Butane nitrile benzene acetonitrile rubber	Butyl rubber	
	NBR	AER(PA)	SR	FR	CR	SBR	11R	
The function	Hardness	70-80	70-80	80	80	60-80	60-80	50-80
	Strain	○	○	○	○	○	○	○
	Non-lubricating property	○	○	×	○	○	○	○
	Wear resistance	○	○	×	○	○	○	○
	Anti-tension	○	○	×	○	○	○	○
Heat resistance	The anti-tears to pieces	○	○	×	○	○	○	○
	Lowest temperature (°C)	-50	-20	-60	-40	-50	-50	-60
	Tallest temperature (°C)	135	170	250	220	120	120	130
Advantage	Price is cheap, oil proof and can bear resistance, the antienzym ecold, anti-bleb bulge is good, the range of application is wide	To press the additive reaction very small, the heat resistance is good, the anti-bubble bulge is good	The anti-hot is very good, the anti-low temperature is very good	Orientati on most additives, heat-proof necessarily very good, the anti-bleb bulge is good	The adaptability of air temperature is good, the abrasion proof the function good, return to jump the instaurat ion good	To the ethanol, aqua ethanol react smaller	Bear the ozone, the ageing resistance is good, to incombustibility hydraulic pressure oil react small	
Weakness	The heat resistance is bad	The anti-low temperature is bad	The anti-bleb bulge is bad, to acid oil and extreme press the additive do not adapt to	The price is high, processing special the molding tool of metal in demand	There is the bulge of bleb to the halide, sweet smell compound CS2 benzene anthranol ester ketone etc.	There is the bulge of bleb to the gas oil	There is the bulge of bleb to the mineral oil, have the fusion to the gas oil	

注:○优、○良、×差
Note:○Excellent,○good, x bad